

**DESCRIPTION**

<b>Species Reactivity</b>	Human/Rat
<b>Specificity</b>	Detects human and rat OV-6 antigen.
<b>Source</b>	Monoclonal Mouse IgG <sub>1</sub> Clone # OV-6
<b>Purification</b>	Protein A or G purified from hybridoma culture supernatant
<b>Immunogen</b>	Carcinogen-treated rat nodular hepatocytes
<b>Formulation</b>	Lyophilized from a 0.2 µm filtered solution in PBS with Trehalose. See Certificate of Analysis for details. *Small pack size (-SP) is supplied as a 0.2 µm filtered solution in PBS.

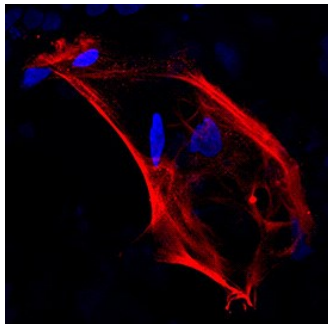
**APPLICATIONS**

**Please Note:** Optimal dilutions should be determined by each laboratory for each application. General Protocols are available in the Technical Information section on our website.

	<b>Recommended Concentration</b>	<b>Sample</b>
<b>Immunocytochemistry</b>	8-25 µg/mL	See Below
<b>CyTOF-ready</b>	Ready to be labeled using established conjugation methods. No BSA or other carrier proteins that could interfere with conjugation.	
<b>Flow Cytometry</b>	Parent, R. <i>et al.</i> (2004) <i>Gastroenterology</i> <b>126(4)</b> :1147. He, Z.P. <i>et al.</i> (2003) <i>Cell Prolif.</i> <b>37(2)</b> :177.	

**DATA**

**Immunocytochemistry**



**OV-6 in BG01V Human Embryonic Stem Cells.** OV-6 was detected in immersion fixed BG01V human embryonic stem cells differentiated into hepatocytes using Mouse Anti-Human/Rat OV-6 Monoclonal Antibody (Catalog # MAB2020) at 10 µg/mL for 3 hours at room temperature. Cells were stained using the NorthernLights™ 557-conjugated Anti-Mouse IgG Secondary Antibody (red; Catalog # NL007) and counterstained with DAPI (blue). Specific staining was localized to cytoplasm and cell surfaces. View our protocol for [Fluorescent ICC Staining of Stem Cells on Coverslips](#).

**PREPARATION AND STORAGE**

<b>Reconstitution</b>	Reconstitute at 0.5 mg/mL in sterile PBS.
<b>Shipping</b>	The product is shipped at ambient temperature. Upon receipt, store it immediately at the temperature recommended below. *Small pack size (-SP) is shipped with polar packs. Upon receipt, store it immediately at -20 to -70 °C
<b>Stability &amp; Storage</b>	<b>Use a manual defrost freezer and avoid repeated freeze-thaw cycles.</b> <ul style="list-style-type: none"> <li>● 12 months from date of receipt, -20 to -70 °C as supplied.</li> <li>● 1 month, 2 to 8 °C under sterile conditions after reconstitution.</li> <li>● 6 months, -20 to -70 °C under sterile conditions after reconstitution.</li> </ul>

**BACKGROUND**

OV-6 antigen has been used as a marker to identify oval cells, putative hepatic stem cells that can differentiate into multiple cell types.

**References:**

1. Dunsford, H.A. and S. Sell (1989) *Cancer Res.* **49**:4887.
2. Parent, R. *et al.* (2004) *Gastroenterology* **126**:1147.
3. He, Z.P. *et al.* (2003) *Cell Prolif.* **37**:177.
4. Lazaro, C.A. *et al.* (2003) *Hepatology* **38**:1095.
5. He, Z.P. *et al.* (2003) *Differentiation* **71**:281.