

DESCRIPTION

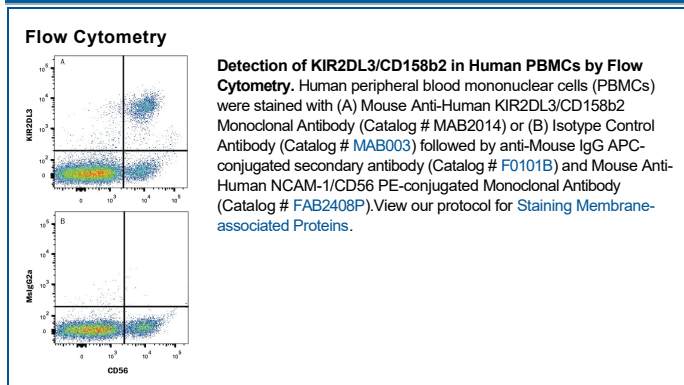
Species Reactivity	Human
Specificity	Detects human KIR2DL3/CD158b2. Stains BaF3 cells transfected with human KIR2DL3 in flow cytometry. Does not stain BaF3 cells transfected with KIR2DL1, 2DL2, 2DL4, 2DL5, 2DS1, 2DS2, 2DS4, 3DL1, 3DL2, or 3DS1.
Source	Monoclonal Mouse IgG _{2A} Clone # 180701
Purification	Protein A or G purified from hybridoma culture supernatant
Immunogen	BaF3 mouse pro-B cell line transfected with human KIR2DL3/CD158b2 Accession # P43628
Formulation	Lyophilized from a 0.2 µm filtered solution in PBS with Trehalose. See Certificate of Analysis for details. *Small pack size (-SP) is supplied either lyophilized or as a 0.2 µm filtered solution in PBS.

APPLICATIONS

Please Note: Optimal dilutions should be determined by each laboratory for each application. [General Protocols](#) are available in the Technical Information section on our website.

	Recommended Concentration	Sample
Flow Cytometry	0.25 µg/10 ⁶ cells	See Below
CytoF-reported	Horowitz, A. <i>et al.</i> (2015) J. Immunol. 195 : 4524. Ready to be labeled using established conjugation methods. No BSA or other carrier proteins that could interfere with conjugation.	

DATA



PREPARATION AND STORAGE

Reconstitution	Reconstitute at 0.5 mg/mL in sterile PBS.
Shipping	The product is shipped at ambient temperature. Upon receipt, store it immediately at the temperature recommended below. *Small pack size (-SP) is shipped with polar packs. Upon receipt, store it immediately at -20 to -70 °C
Stability & Storage	Use a manual defrost freezer and avoid repeated freeze-thaw cycles. <ul style="list-style-type: none"> • 12 months from date of receipt, -20 to -70 °C as supplied. • 1 month, 2 to 8 °C under sterile conditions after reconstitution. • 6 months, -20 to -70 °C under sterile conditions after reconstitution.

BACKGROUND

KIR2DL3 is one of several immunoglobulin-like receptors expressed on NK and T cells that bind MHC class I molecules and regulate killer cell activity. KIR2DL3 interacts specifically with HLA-Cw3.