

DESCRIPTION

Species Reactivity	Rat
Specificity	Detects rat Reg3B in direct ELISAs and Western blots. Does not cross-react with recombinant mouse Reg1A, 1B, 2A, recombinant rat Reg3, or recombinant human Reg4.
Source	Monoclonal Mouse IgG ₁ Clone # 293523
Purification	Protein A or G purified from hybridoma culture supernatant
Immunogen	<i>E. coli</i> -derived recombinant rat Reg3B Glu27-Gly175 Accession # P25031
Formulation	Lyophilized from a 0.2 µm filtered solution in PBS with Trehalose. See Certificate of Analysis for details. *Small pack size (-SP) is supplied as a 0.2 µm filtered solution in PBS.

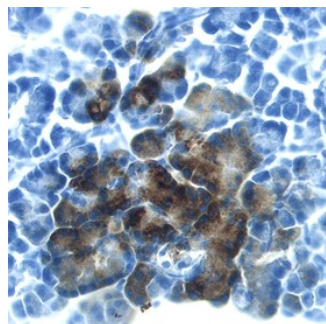
APPLICATIONS

Please Note: Optimal dilutions should be determined by each laboratory for each application. *General Protocols* are available in the *Technical Information* section on our website.

	Recommended Concentration	Sample
Western Blot	1 µg/mL	Recombinant Rat Reg3B under non-reducing conditions only
Immunohistochemistry	8-25 µg/mL	See Below

DATA

Immunohistochemistry



Reg3B in Rat Pancreas. Reg3B was detected in perfusion fixed frozen sections of rat pancreas using Mouse Anti-Rat Reg3B Monoclonal Antibody (Catalog # MAB1996) at 25 µg/mL overnight at 4 °C. Tissue was stained using the Anti-Mouse HRP-DAB Cell & Tissue Staining Kit (brown; Catalog # CTS002) and counterstained with hematoxylin (blue). Specific labeling was localized to the cytoplasm of exocrine cells. View our protocol for [Chromogenic IHC Staining of Frozen Tissue Sections](#).

PREPARATION AND STORAGE

Reconstitution	Reconstitute at 0.5 mg/mL in sterile PBS.
Shipping	The product is shipped at ambient temperature. Upon receipt, store it immediately at the temperature recommended below. *Small pack size (-SP) is shipped with polar packs. Upon receipt, store it immediately at -20 to -70 °C
Stability & Storage	Use a manual defrost freezer and avoid repeated freeze-thaw cycles. <ul style="list-style-type: none"> ● 12 months from date of receipt, -20 to -70 °C as supplied. ● 1 month, 2 to 8 °C under sterile conditions after reconstitution. ● 6 months, -20 to -70 °C under sterile conditions after reconstitution.

BACKGROUND

Reg3B, also named Pancreatitis-Associated Protein (PAP) and peptide 23, belongs to the Regenerating gene family (Reg), within the superfamily of C-type lectins. It has been classified as a member of the type III subclass of the Reg family. Reg3B has anti-apoptotic effects on pancreatic acinar cells and is a novel motor and sensory neuron survival factor.