

DESCRIPTION

Species Reactivity	Human
Specificity	Detects human SCGF/CLEC11a in direct ELISAs and Western blots. In direct ELISAs and Western blots, approximately 50% cross-reactivity with recombinant mouse SCGF-β is observed.
Source	Monoclonal Mouse IgG _{2A} Clone # 239029
Purification	Protein A or G purified from hybridoma culture supernatant
Immunogen	<i>E. coli</i> -derived recombinant human SCGF/CLEC11a Gly19-Phe245 Accession # BAA21499
Formulation	Lyophilized from a 0.2 μm filtered solution in PBS with Trehalose. See Certificate of Analysis for details. *Small pack size (-SP) is supplied as a 0.2 μm filtered solution in PBS.

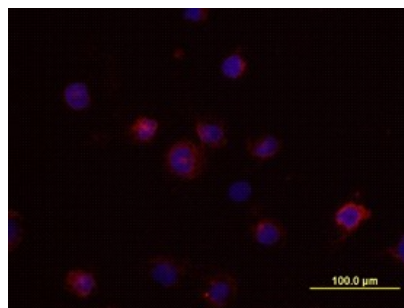
APPLICATIONS

Please Note: Optimal dilutions should be determined by each laboratory for each application. *General Protocols* are available in the *Technical Information* section on our website.

	Recommended Concentration	Sample
Western Blot	1 μg/mL	Recombinant Human SCGF/CLEC11a
Immunocytochemistry	8-25 μg/mL	See Below
Immunohistochemistry	8-25 μg/mL	See Below

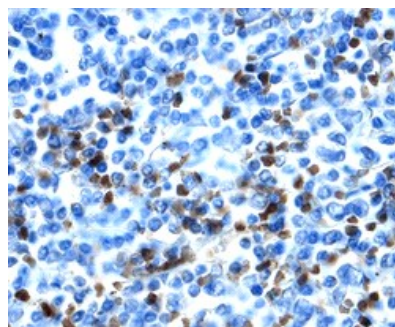
DATA

Immunocytochemistry



SCGF/CLEC11a in THP-1 Human Cell Line.
SCGF/CLEC11a was detected in immersion fixed IFN gamma activated THP-1 human acute monocytic leukemia cell line using 10 μg/mL Mouse Anti-Human SCGF/CLEC11a Monoclonal Antibody (Catalog # MAB1904) for 3 hours at room temperature. Cells were stained with the NorthernLights™ 557-conjugated Anti-Mouse IgG Secondary Antibody (red; Catalog # NL007) and counterstained with DAPI (blue). View our protocol for [Chromogenic IHC Staining of Paraffin-embedded Tissue Sections](#).

Immunohistochemistry



SCGF/CLEC11a in Human Spleen. SCGF/CLEC11a was detected in immersion fixed paraffin-embedded sections of human spleen using 25 μg/mL Mouse Anti-Human SCGF/CLEC11a Monoclonal Antibody (Catalog # MAB1904) overnight at 4 °C. Tissue was stained with the Anti-Mouse HRP-DAB Cell & Tissue Staining Kit (brown; Catalog # CTS002) and counterstained with hematoxylin (blue). View our protocol for [Fluorescent ICC Staining of Cells on Coverslips](#).

PREPARATION AND STORAGE

Reconstitution	Reconstitute at 0.5 mg/mL in sterile PBS.
Shipping	The product is shipped at ambient temperature. Upon receipt, store it immediately at the temperature recommended below. *Small pack size (-SP) is shipped with polar packs. Upon receipt, store it immediately at -20 to -70 °C
Stability & Storage	Use a manual defrost freezer and avoid repeated freeze-thaw cycles. <ul style="list-style-type: none"> • 12 months from date of receipt, -20 to -70 °C as supplied. • 1 month, 2 to 8 °C under sterile conditions after reconstitution. • 6 months, -20 to -70 °C under sterile conditions after reconstitution.

BACKGROUND

Stem Cell Growth Factor (SCGF) is a secreted sulfated glycoprotein that belongs to the C-type lectin superfamily (CLEC11a) and is expressed primarily in hematopoietic tissues. It functions as a growth factor for primitive hematopoietic progenitor cells. SCGF-β is a truncated variant of SCGF-α that has aa 78 amino acid deletion and lacks a functional calcium-dependent carbohydrate-recognition domain.