

DESCRIPTION

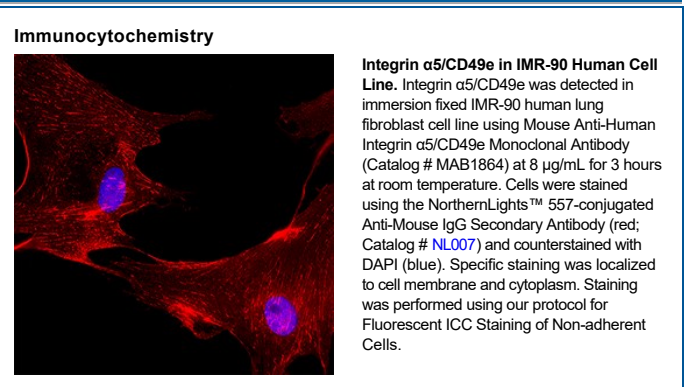
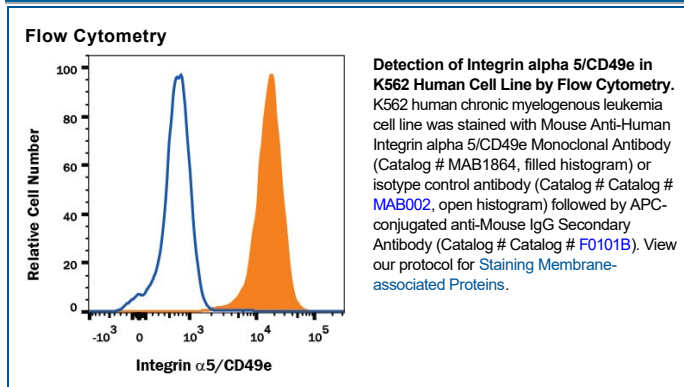
Species Reactivity	Human
Specificity	Detects human Integrin $\alpha 5$ /CD49e.
Source	Monoclonal Mouse IgG ₁ Clone # 238307
Purification	Protein A or G purified from hybridoma culture supernatant
Immunogen	Mouse myeloma cell line NS0-derived recombinant human Integrin $\alpha 5$ /CD49e Phe42-Tyr995 Accession # P08648
Endotoxin Level	<0.10 EU per 1 μ g of the antibody by the LAL method.
Formulation	Lyophilized from a 0.2 μ m filtered solution in PBS with Trehalose. See Certificate of Analysis for details. *Small pack size (-SP) is supplied either lyophilized or as a 0.2 μ m filtered solution in PBS.

APPLICATIONS

Please Note: Optimal dilutions should be determined by each laboratory for each application. General Protocols are available in the Technical Information section on our website.

	Recommended Concentration	Sample
Flow Cytometry	0.25 μ g/10 ⁶ cells	See Below
Immunocytochemistry	8-25 μ g/mL	Immersion fixed IMR-90 human lung fibroblast cell line
CyTOF-ready	Ready to be labeled using established conjugation methods. No BSA or other carrier proteins that could interfere with conjugation.	
Adhesion Activation	The adhesion of K562 human chronic myelogenous leukemia cells (5 x 10 ⁴ cells/well) to immobilized Bovine Fibronectin (Catalog # 1030-FN, 10 μ g/mL, 100 μ L/well) was maximally enhanced (2-2.5 fold) by pre-treatment of cells with 500 ng/mL of the antibody.	

DATA



PREPARATION AND STORAGE

Reconstitution	Reconstitute at 0.5 mg/mL in sterile PBS.
Shipping	The product is shipped at ambient temperature. Upon receipt, store it immediately at the temperature recommended below. *Small pack size (-SP) is shipped with polar packs. Upon receipt, store it immediately at -20 to -70 °C
Stability & Storage	Use a manual defrost freezer and avoid repeated freeze-thaw cycles. <ul style="list-style-type: none"> • 12 months from date of receipt, -20 to -70 °C as supplied. • 1 month, 2 to 8 °C under sterile conditions after reconstitution. • 6 months, -20 to -70 °C under sterile conditions after reconstitution.

BACKGROUND

The Integrin $\alpha 5$ subunit, also called CD49e, associates with the Integrin $\beta 1$ subunit (CD29) to form the VLA-5 complex. It functions as a receptor for fibronectin and is expressed on fibroblasts, endothelial cells, epithelial cells, platelets and some melanoma cell lines (1, 2).

References:

1. Springer, T.A. *et al.* (1982) Immunol. Rev. **68**:171.
2. Te Velde, A. *et al.* (1988) J. Immunol. **140**:1548.