

## DESCRIPTION

<b>Species Reactivity</b>	Human
<b>Specificity</b>	Detects recombinant human CD2 in direct ELISAs. In direct ELISAs, no cross-reactivity with recombinant mouse (rm) CD2 or rmCD2F-10 is observed.
<b>Source</b>	Monoclonal Mouse IgG <sub>1</sub> Clone # 299812
<b>Purification</b>	Protein A or G purified from hybridoma culture supernatant
<b>Immunogen</b>	Mouse myeloma cell line NS0-derived recombinant human CD2 Lys25-Asp209 Accession # P06729
<b>Formulation</b>	Lyophilized from a 0.2 µm filtered solution in PBS with Trehalose. See Certificate of Analysis for details. *Small pack size (-SP) is supplied either lyophilized or as a 0.2 µm filtered solution in PBS.

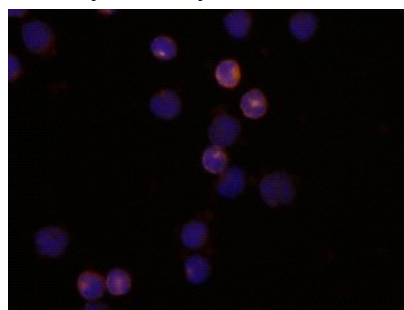
## APPLICATIONS

**Please Note:** Optimal dilutions should be determined by each laboratory for each application. *General Protocols* are available in the *Technical Information* section on our website.

	<b>Recommended Concentration</b>	<b>Sample</b>
<b>Flow Cytometry</b>	2.5 µg/10 <sup>6</sup> cells	Human whole blood lymphocytes
<b>Immunocytochemistry</b>	8-25 µg/mL	See Below
<b>CyTOF-ready</b>	Ready to be labeled using established conjugation methods. No BSA or other carrier proteins that could interfere with conjugation.	

## DATA

### Immunocytochemistry



**CD2 in Human PBMCs.** CD2 was detected in immersion fixed human peripheral blood mononuclear cells (PBMCs) using 10 µg/mL Mouse Anti-Human CD2 Monoclonal Antibody (Catalog # MAB18561) for 3 hours at room temperature. Cells were stained with the NorthernLights™ 557-conjugated Donkey Anti-Mouse IgG Secondary Antibody (red; Catalog # NL007) and counterstained with DAPI (blue). View our protocol for [Fluorescent ICC Staining of Non-adherent Cells](#).

## PREPARATION AND STORAGE

<b>Reconstitution</b>	Reconstitute at 0.5 mg/mL in sterile PBS.
<b>Shipping</b>	The product is shipped at ambient temperature. Upon receipt, store it immediately at the temperature recommended below. *Small pack size (-SP) is shipped with polar packs. Upon receipt, store it immediately at -20 to -70 °C
<b>Stability &amp; Storage</b>	<b>Use a manual defrost freezer and avoid repeated freeze-thaw cycles.</b> <ul style="list-style-type: none"> <li>● 12 months from date of receipt, -20 to -70 °C as supplied.</li> <li>● 1 month, 2 to 8 °C under sterile conditions after reconstitution.</li> <li>● 6 months, -20 to -70 °C under sterile conditions after reconstitution.</li> </ul>

## BACKGROUND

CD2 is a type I glycoprotein belonging to the Ig superfamily and is expressed on T, NK, B, and some antigen presenting cells. Human CD2 binds human CD58 on antigen-presenting cells to induce co-stimulating signals in T cells.