

DESCRIPTION

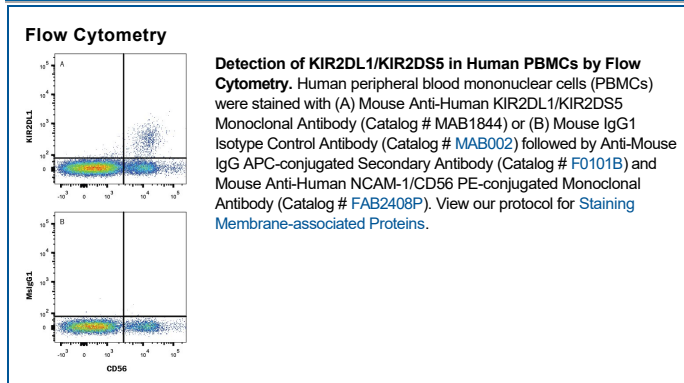
Species Reactivity	Human
Specificity	Detects human KIR2DL1/KIR2DS5 on transfected cells. It does not stain cells transfected with KIR2DL2, 2DL3, 2DL4, 2DL5, 2DS1, 2DS2, 2DS4, 3DL1, 3DL2, or 3DS1.
Source	Monoclonal Mouse IgG ₁ Clone # 143211
Purification	Protein A or G purified from hybridoma culture supernatant
Immunogen	BaF3 mouse pro-B cell line transfected with human KIR2DL1/KIR2DS5 Accession # P43626
Formulation	Lyophilized from a 0.2 µm filtered solution in PBS with Trehalose. See Certificate of Analysis for details. *Small pack size (-SP) is supplied either lyophilized or as a 0.2 µm filtered solution in PBS.

APPLICATIONS

Please Note: Optimal dilutions should be determined by each laboratory for each application. [General Protocols](#) are available in the Technical Information section on our website.

	Recommended Concentration	Sample
Flow Cytometry	0.25 µg/10 ⁶ cells	See Below
CytoF-reported	Horowitz, A. <i>et al.</i> (2015) J. Immunol. 195 : 4524. Ready to be labeled using established conjugation methods. No BSA or other carrier proteins that could interfere with conjugation.	

DATA



PREPARATION AND STORAGE

Reconstitution	Reconstitute at 0.5 mg/mL in sterile PBS.
Shipping	The product is shipped at ambient temperature. Upon receipt, store it immediately at the temperature recommended below. *Small pack size (-SP) is shipped with polar packs. Upon receipt, store it immediately at -20 to -70 °C
Stability & Storage	Use a manual defrost freezer and avoid repeated freeze-thaw cycles. <ul style="list-style-type: none"> • 12 months from date of receipt, -20 to -70 °C as supplied. • 1 month, 2 to 8 °C under sterile conditions after reconstitution. • 6 months, -20 to -70 °C under sterile conditions after reconstitution.

BACKGROUND

KIR2DL1 is one of several immunoglobulin-like receptors expressed on NK cells that bind MHC class I molecules and transmit inhibitory signals. KIR2DL1 is specific for HLA-C alleles with Asn77 and Lys80.