

DESCRIPTION

Species Reactivity	Human
Specificity	Can be used to detect CCR5 present on stimulated human PBMCs only after cells are fixed with 2% formaldehyde. It does not detect CCR5 on unfixed human PBMCs. It does not cross-react with CCR1, CCR2, or CCR3. For additional information regarding epitope specificity for this antibody and other R&D Systems anti-human CCR5 antibodies, see Lee, B. et al., 1999, J. Biol. Chem. 274 :9617.
Source	Monoclonal Mouse IgG _{2B} Clone # 45523
Purification	Protein A or G purified from hybridoma culture supernatant
Immunogen	NS0 mouse myeloma cell line transfected with human CCR5 Met1-Leu352 Accession # P51681
Formulation	Lyophilized from a 0.2 µm filtered solution in PBS with Trehalose. See Certificate of Analysis for details. *Small pack size (-SP) is supplied as a 0.2 µm filtered solution in PBS.

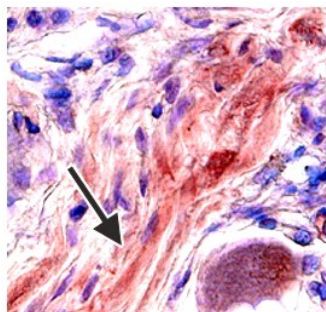
APPLICATIONS

Please Note: Optimal dilutions should be determined by each laboratory for each application. *General Protocols* are available in the *Technical Information* section on our website.

	Recommended Concentration	Sample
Immunohistochemistry	8-25 µg/mL	See Below

DATA

Immunohistochemistry



CCR5 in Human Dorsal Root Ganglia.

CCR5 was detected in immersion fixed paraffin-embedded sections of human dorsal root ganglia using 25 µg/mL Human CCR5 Monoclonal Antibody (Catalog # MAB181) overnight at 4 °C. Tissue was stained with the Anti-Mouse HRP-AEC Cell & Tissue Staining Kit (red; Catalog # CTS003) and counterstained with hematoxylin (blue). View our protocol for [Chromogenic IHC Staining of Paraffin-embedded Tissue Sections](#).

PREPARATION AND STORAGE

Reconstitution	Reconstitute at 0.5 mg/mL in sterile PBS.
Shipping	The product is shipped at ambient temperature. Upon receipt, store it immediately at the temperature recommended below. *Small pack size (-SP) is shipped with polar packs. Upon receipt, store it immediately at -20 to -70 °C
Stability & Storage	Use a manual defrost freezer and avoid repeated freeze-thaw cycles. <ul style="list-style-type: none"> ● 12 months from date of receipt, -20 to -70 °C as supplied. ● 1 month, 2 to 8 °C under sterile conditions after reconstitution. ● 6 months, -20 to -70 °C under sterile conditions after reconstitution.

BACKGROUND

CCR5 is a G protein-linked seven transmembrane domain chemokine receptor. CCR5 serves as a receptor for several chemokines including MIP-1α, MIP-1β, MCP-2, and RANTES. It also functions as a coreceptor for Macrophage Tropic HIV-1 infection.