

**DESCRIPTION**

<b>Species Reactivity</b>	Human
<b>Specificity</b>	Specifically stains human CCR9 transfectants and MOLT-4 cells. It does not react with the parental BaF3 cells or human CCR7-transfected BaF3 cells.
<b>Source</b>	Monoclonal Mouse IgG <sub>2A</sub> Clone # 112509
<b>Purification</b>	Protein A or G purified from hybridoma culture supernatant
<b>Immunogen</b>	BaF3 mouse pro-B cell line transfected with human CCR9 Met1-Leu369 Accession # P51686
<b>Formulation</b>	Lyophilized from a 0.2 µm filtered solution in PBS with Trehalose. See Certificate of Analysis for details. *Small pack size (-SP) is supplied as a 0.2 µm filtered solution in PBS.

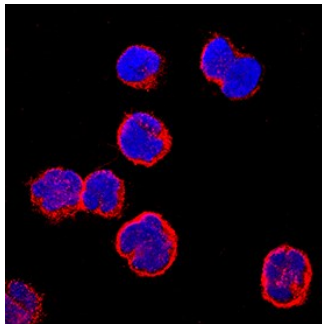
**APPLICATIONS**

**Please Note:** Optimal dilutions should be determined by each laboratory for each application. *General Protocols* are available in the *Technical Information* section on our website.

	<b>Recommended Concentration</b>	<b>Sample</b>
<b>Flow Cytometry</b>	2.5 µg/10 <sup>6</sup> cells	MOLT-4 human acute lymphoblastic leukemia cell line
<b>Immunocytochemistry</b>	15-25 µg/mL	See Below
<b>Immunohistochemistry</b>	8-25 µg/mL	Immersion fixed paraffin-embedded sections of human thymus
<b>CyTOF-ready</b>	Ready to be labeled using established conjugation methods. No BSA or other carrier proteins that could interfere with conjugation.	

**DATA**

**Immunocytochemistry**



**CCR9 in MOLT-4 Human Cell Line.** CCR9 was detected in immersion fixed MOLT-4 human acute lymphoblastic leukemia cell line using Mouse Anti-Human CCR9 Monoclonal Antibody (Catalog # MAB179) at 25 µg/mL for 3 hours at room temperature. Cells were stained using the NorthernLights™ 557-conjugated Anti-Mouse IgG Secondary Antibody (red; Catalog # NL007) and counterstained with DAPI (blue). Specific staining was localized to plasma membranes. View our protocol for [Fluorescent ICC Staining of Non-adherent Cells](#).

**PREPARATION AND STORAGE**

<b>Reconstitution</b>	Reconstitute at 0.5 mg/mL in sterile PBS.
<b>Shipping</b>	The product is shipped at ambient temperature. Upon receipt, store it immediately at the temperature recommended below. *Small pack size (-SP) is shipped with polar packs. Upon receipt, store it immediately at -20 to -70 °C
<b>Stability &amp; Storage</b>	<b>Use a manual defrost freezer and avoid repeated freeze-thaw cycles.</b> <ul style="list-style-type: none"> <li>● 12 months from date of receipt, -20 to -70 °C as supplied.</li> <li>● 1 month, 2 to 8 °C under sterile conditions after reconstitution.</li> <li>● 6 months, -20 to -70 °C under sterile conditions after reconstitution.</li> </ul>

**BACKGROUND**

CCR9 is a G protein-linked seven transmembrane domain cytokine receptor. CCR9 serves as a receptor for CCL25/TECK. It is expressed on mature and immature thymocytes and some peripheral T and B cells.