

**DESCRIPTION**

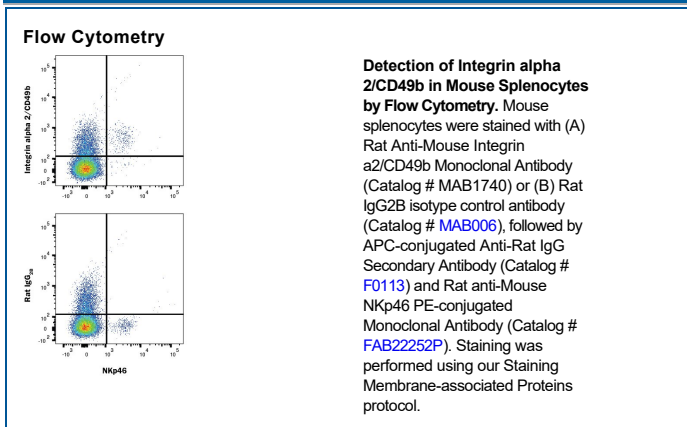
<b>Species Reactivity</b>	Mouse
<b>Specificity</b>	Detects mouse Integrin $\alpha$ 2/CD49b in direct ELISAs. In direct ELISAs, no cross-reactivity with recombinant mouse Integrin $\alpha$ 3, $\alpha$ 4, $\alpha$ 5, $\alpha$ E, or $\alpha$ V is observed.
<b>Source</b>	Monoclonal Rat IgG <sub>2B</sub> Clone # 235033
<b>Purification</b>	Protein A or G purified from hybridoma culture supernatant
<b>Immunogen</b>	Mouse myeloma cell line NS0-derived recombinant mouse Integrin $\alpha$ 2/CD49b Tyr27-Thr1129 Accession # Q62469
<b>Formulation</b>	Lyophilized from a 0.2 $\mu$ m filtered solution in PBS with Trehalose.

**APPLICATIONS**

**Please Note:** Optimal dilutions should be determined by each laboratory for each application. *General Protocols* are available in the *Technical Information* section on our website.

	<b>Recommended Concentration</b>	<b>Sample</b>
<b>Flow Cytometry</b>	0.25 $\mu$ g/10 <sup>6</sup> cells	See Below
<b>CyTOF-ready</b>	Ready to be labeled using established conjugation methods. No BSA or other carrier proteins that could interfere with conjugation.	

**DATA**



**PREPARATION AND STORAGE**

<b>Reconstitution</b>	Reconstitute at 0.5 mg/mL in sterile PBS.
<b>Shipping</b>	The product is shipped at ambient temperature. Upon receipt, store it immediately at the temperature recommended below.
<b>Stability &amp; Storage</b>	<p><b>Use a manual defrost freezer and avoid repeated freeze-thaw cycles.</b></p> <ul style="list-style-type: none"> <li>• 12 months from date of receipt, -20 to -70 °C as supplied.</li> <li>• 1 month, 2 to 8 °C under sterile conditions after reconstitution.</li> <li>• 6 months, -20 to -70 °C under sterile conditions after reconstitution.</li> </ul>

**BACKGROUND**

The Integrin  $\alpha$ 2 subunit, also known as CD49b and VLA-2  $\alpha$  subunit, forms a heterodimer with the Integrin  $\alpha$ 1 (CD29) or  $\alpha$ 4 (CD104) subunits and binds Laminin.