

DESCRIPTION

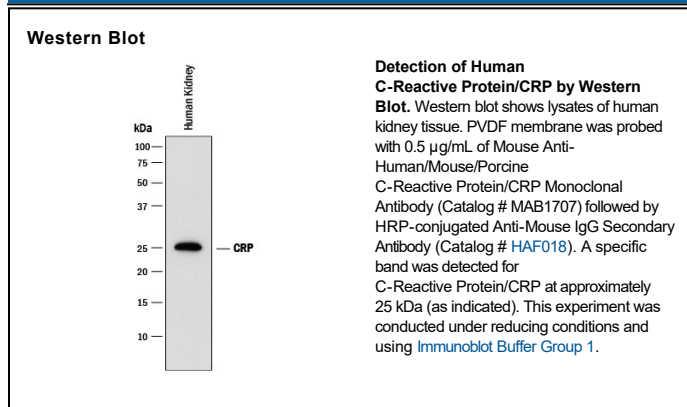
Species Reactivity	Human/Mouse/Porcine
Specificity	Detects rhCRP in direct ELISAs and Western blots. In direct ELISAs and Western blots, this antibody shows 100% cross-reactivity with rmCRP and rpCRP but no cross-reactivity with rrCRP.
Source	Monoclonal Mouse IgG _{2A} Clone # 232026
Purification	Protein A or G purified from hybridoma culture supernatant
Immunogen	Human plasma-derived CRP
Endotoxin Level	<0.10 EU per 1 µg of the antibody by the LAL method.
Formulation	Lyophilized from a 0.2 µm filtered solution in PBS with Trehalose. See Certificate of Analysis for details. *Small pack size (-SP) is supplied either lyophilized or as a 0.2 µm filtered solution in PBS.

APPLICATIONS

Please Note: Optimal dilutions should be determined by each laboratory for each application. *General Protocols* are available in the *Technical Information* section on our website.

	Recommended Concentration	Sample
Western Blot	0.5 µg/mL	See Below

DATA



PREPARATION AND STORAGE

Reconstitution	Reconstitute at 0.5 mg/mL in sterile PBS.
Shipping	The product is shipped at ambient temperature. Upon receipt, store it immediately at the temperature recommended below. *Small pack size (-SP) is shipped with polar packs. Upon receipt, store it immediately at -20 to -70 °C
Stability & Storage	Use a manual defrost freezer and avoid repeated freeze-thaw cycles. <ul style="list-style-type: none"> ● 12 months from date of receipt, -20 to -70 °C as supplied. ● 1 month, 2 to 8 °C under sterile conditions after reconstitution. ● 6 months, -20 to -70 °C under sterile conditions after reconstitution.

BACKGROUND

CRP is a secreted protein that belongs to the Pentraxin family. It circulates as a non-covalent homopentamer. The CRP concentration in human plasma is highly increased during acute phase response to tissue injury or infection.