

DESCRIPTION

Species Reactivity	Human/Mouse/Rat/Chicken
Specificity	Detects human, mouse, rat, and chicken Pax7 (3-8).
Source	Monoclonal Mouse IgG ₁ Clone # PAX7
Purification	Protein A or G purified from hybridoma culture supernatant
Immunogen	<i>E. coli</i> -derived recombinant chicken Pax7 aa 352-523
Formulation	Lyophilized from a 0.2 µm filtered solution in PBS with Trehalose. See Certificate of Analysis for details. *Small pack size (-SP) is supplied as a 0.2 µm filtered solution in PBS.

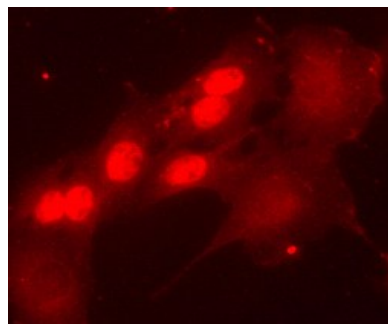
APPLICATIONS

Please Note: Optimal dilutions should be determined by each laboratory for each application. *General Protocols* are available in the *Technical Information* section on our website.

	Recommended Concentration	Sample
Immunocytochemistry	8-25 µg/mL	See Below

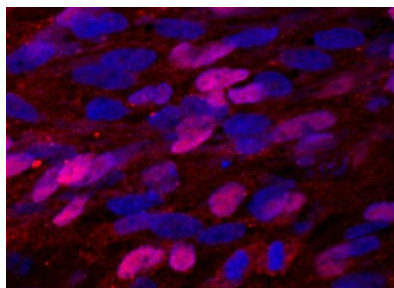
DATA

Immunocytochemistry



Pax7 in C2C12 Mouse Cell Line.
Pax7 was detected in immersion fixed C2C12 mouse myoblast cell line using 10 µg/mL Mouse Anti-Human/Mouse/Rat/Chicken Pax7 Monoclonal Antibody (Catalog # MAB1675) for 3 hours at room temperature. Cells were stained (red). View our protocol for [Fluorescent ICC Staining of Cells on Coverslips](#).

Immunocytochemistry



Pax7 in iBJ6 iPS Cell Line. Pax7 was detected in immersion fixed iBJ6 iPS cell line differentiated into myoblasts using Mouse Anti-Human/Mouse/Rat/Chicken Pax7 Monoclonal Antibody (Catalog # MAB1675) at 10 µg/mL for 3 hours at room temperature. Cells were stained using the NorthernLights™ 557-conjugated Anti-Mouse IgG Secondary Antibody (red; Catalog # NL007) and counterstained with DAPI (blue). Specific staining was localized to nuclei. View our protocol for [Fluorescent ICC Staining of Stem Cells on Coverslips](#).

PREPARATION AND STORAGE

Reconstitution	Reconstitute at 0.5 mg/mL in sterile PBS.
Shipping	The product is shipped at ambient temperature. Upon receipt, store it immediately at the temperature recommended below. *Small pack size (-SP) is shipped with polar packs. Upon receipt, store it immediately at -20 to -70 °C
Stability & Storage	Use a manual defrost freezer and avoid repeated freeze-thaw cycles. <ul style="list-style-type: none"> ● 12 months from date of receipt, -20 to -70 °C as supplied. ● 1 month, 2 to 8 °C under sterile conditions after reconstitution. ● 6 months, -20 to -70 °C under sterile conditions after reconstitution.

BACKGROUND

Pax7 belongs to the paired box protein family of transcription factors. It is an important regulator of neural and skeletal muscle development (1 - 3).

References:

1. Jostes, B. *et al.* (1990) *Mech. Dev.* **33**(1):27.
2. Asakura, A. *et al.* (2001) *Differentiation* **68**(4-5):245.
3. Kawakami, A. *et al.* (1997) *Mech. Dev.* **66**:119.
4. Ericson, J. *et al.* (1996) *Cell* **87**:661.
5. Berggren, K. *et al.* (2001) *Dev. Dyn.* **222**:1.
6. Takebayashi, H. *et al.* (2002) *Mech. Dev.* **113**:169.
7. McLoon, L.K. and J. Wirtschafter (2003) *Invest. Ophthalmol. Vis. Sci.* **44**:1927.
8. Yamamoto, S. *et al.* (2001) *J. Neurosci.* **21**:9814.