

DESCRIPTION

Species Reactivity	Human
Specificity	Detects human CD5 in direct ELISAs.
Source	Monoclonal Mouse IgG _{2B} Clone # 205910
Purification	Protein A or G purified from hybridoma culture supernatant
Immunogen	Mouse myeloma cell line, NS0-derived human CD5 Gly24-Asn371 Accession # P06127
Formulation	Lyophilized from a 0.2 µm filtered solution in PBS with Trehalose. See Certificate of Analysis for details. *Small pack size (-SP) is supplied either lyophilized or as a 0.2 µm filtered solution in PBS.

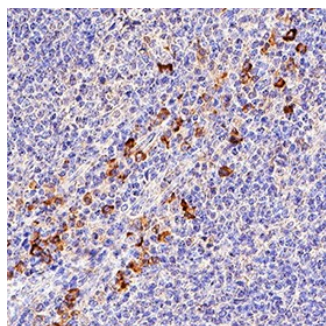
APPLICATIONS

Please Note: Optimal dilutions should be determined by each laboratory for each application. General Protocols are available in the Technical Information section on our website.

	Recommended Concentration	Sample
Immunohistochemistry	5-25 µg/mL	See Below

DATA

Immunohistochemistry



CD5 in Human Tonsil. CD5 was detected in immersion fixed paraffin-embedded sections of human tonsil using Mouse Anti-Human CD5 Monoclonal Antibody (Catalog # MAB16361) at 5 µg/mL for 1 hour at room temperature followed by incubation with the Anti-Mouse IgG VisUCyte™ HRP Polymer Antibody (Catalog # VC001). Before incubation with the primary antibody, tissue was subjected to heat-induced epitope retrieval using Antigen Retrieval Reagent-Basic (Catalog # CTS013). Tissue was stained using DAB (brown) and counterstained with hematoxylin (blue). Specific staining was localized to cell surfaces in lymphocytes. View our protocol for IHC Staining with VisUCyte HRP Polymer Detection Reagents.

PREPARATION AND STORAGE

Reconstitution	Reconstitute at 0.5 mg/mL in sterile PBS.
Shipping	The product is shipped at ambient temperature. Upon receipt, store it immediately at the temperature recommended below. *Small pack size (-SP) is shipped with polar packs. Upon receipt, store it immediately at -20 to -70 °C
Stability & Storage	Use a manual defrost freezer and avoid repeated freeze-thaw cycles. <ul style="list-style-type: none"> • 12 months from date of receipt, -20 to -70 °C as supplied. • 1 month, 2 to 8 °C under sterile conditions after reconstitution. • 6 months, -20 to -70 °C under sterile conditions after reconstitution.

BACKGROUND

CD5, also known as Leu-1, is a type I transmembrane protein belonging to the scavenger receptor cysteine-rich (SRCR) superfamily. It is expressed on thymocytes, T cells and the B1a subpopulation of B cells. CD5 binds the C-type lectin, CD72, and modulates signaling through the antigen receptors on T and B cells. CD5 has been shown to provide either positive or negative co-stimulatory signals depending on cell type to regulate immune responses.

References:

1. Ledbetter, J.A. *et al.* (1985) J. Immunol. **135**:2331.
2. Damle, N.K. *et al.* (1988) J. Immunol. **140**:1753.