

DESCRIPTION

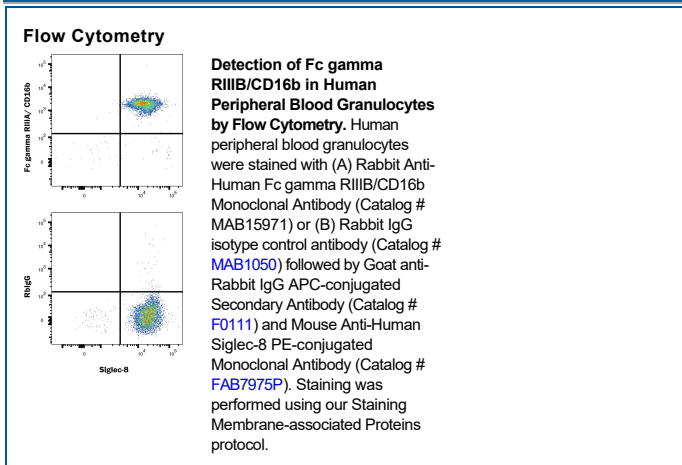
Species Reactivity	Human
Specificity	Detects human Fc gamma RIIIB/CD16b in Elisias.
Source	Recombinant Monoclonal Rabbit IgG Clone # 2830D
Purification	Protein A or G purified from hybridoma culture supernatant
Immunogen	HEK293-derived human Fc gamma RIIIB/CD16b protein Met18-Ser200 Accession # NP_000561
Formulation	Lyophilized from a 0.2 μm filtered solution in PBS with Trehalose. See Certificate of Analysis for details. *Small pack size (-SP) is supplied either lyophilized or as a 0.2 μm filtered solution in PBS.

APPLICATIONS

Please Note: Optimal dilutions should be determined by each laboratory for each application. General Protocols are available in the Technical Information section on our website.

	Recommended Concentration	Sample
Flow Cytometry	0.25 μg/10 ⁶ cells	Human peripheral blood cells

DATA



PREPARATION AND STORAGE

Reconstitution	Reconstitute at 0.5 mg/mL in sterile PBS.
Shipping	The product is shipped at ambient temperature. Upon receipt, store it immediately at the temperature recommended below. *Small pack size (-SP) is shipped with polar packs. Upon receipt, store it immediately at -20 to -70 °C
Stability & Storage	Use a manual defrost freezer and avoid repeated freeze-thaw cycles. <ul style="list-style-type: none"> • 12 months from date of receipt, -20 to -70 °C as supplied. • 1 month, 2 to 8 °C under sterile conditions after reconstitution. • 6 months, -20 to -70 °C under sterile conditions after reconstitution.

BACKGROUND

Fc gamma RIIIA and B are low affinity receptors for polyvalent immune-complexed IgG. Fc gamma RIIIA is a transmembrane activating receptor expressed by NK cells, T cells, monocytes, and macrophages. Fc gamma RIIIB is a non-activating GPI-linked decoy receptor expressed on neutrophils and eosinophils.