

DESCRIPTION

Species Reactivity	Mouse
Specificity	Detects mouse FIZZ1/RELM α in direct ELISAs and Western blots. In direct ELISAs and Western blots, no cross-reactivity with recombinant mouse (rm) RELM β or rmResistin is observed.
Source	Monoclonal Rat IgG _{2A} Clone # 226033
Purification	Protein A or G purified from hybridoma culture supernatant
Immunogen	E. coli-derived recombinant mouse FIZZ1/RELM α Asp24-Ser111 Accession # Q9EP95
Formulation	Lyophilized from a 0.2 μ m filtered solution in PBS with Trehalose. See Certificate of Analysis for details. *Small pack size (-SP) is supplied either lyophilized or as a 0.2 μ m filtered solution in PBS.

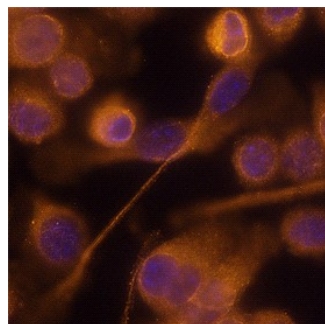
APPLICATIONS

Please Note: Optimal dilutions should be determined by each laboratory for each application. *General Protocols* are available in the *Technical Information* section on our website.

	Recommended Concentration	Sample
Western Blot	1 μ g/mL	Recombinant Mouse FIZZ1/RELM α
Immunocytochemistry	8-25 μ g/mL	See Below

DATA

Immunocytochemistry



FIZZ1/RELM α in BV-2 Mouse Cell Line.
FIZZ1/RELM α was detected in immersion fixed BV-2 mouse microglia cell line using Rat Anti-Mouse FIZZ1/RELM α Monoclonal Antibody (Catalog # MAB1523) at 25 μ g/mL for 3 hours at room temperature. Cells were stained using the NorthernLights™ 557-conjugated Anti-Rat IgG Secondary Antibody (orange; Catalog # NL013) and counterstained with DAPI (blue). Specific staining was localized to cytoplasm. View our protocol for [Fluorescent ICC Staining of Cells on Coverslips](#).

PREPARATION AND STORAGE

Reconstitution	Reconstitute at 0.5 mg/mL in sterile PBS.
Shipping	The product is shipped at ambient temperature. Upon receipt, store it immediately at the temperature recommended below. *Small pack size (-SP) is shipped with polar packs. Upon receipt, store it immediately at -20 to -70 °C
Stability & Storage	Use a manual defrost freezer and avoid repeated freeze-thaw cycles. <ul style="list-style-type: none"> ● 12 months from date of receipt, -20 to -70 °C as supplied. ● 1 month, 2 to 8 °C under sterile conditions after reconstitution. ● 6 months, -20 to -70 °C under sterile conditions after reconstitution.

BACKGROUND

RELM α , also known as 'found in inflammatory zone 1' (FIZZ1) belongs to the RELM/FIZZ family of cysteine rich secretory proteins. RELM α is most abundantly expressed in white adipose tissue but not in preadipocytes or 3T3-L1 adipocytes. RELM α expression is also detected in mammary tissue, heart, lung, and tongue.