

DESCRIPTION

Species Reactivity	Human
Specificity	Detects human CD8 α in direct ELISAs. In direct ELISAs, no cross-reactivity with mouse CD8 α is observed.
Source	Monoclonal Mouse IgG _{2B} Clone # 37006
Purification	Protein A or G purified from hybridoma culture supernatant
Immunogen	Mouse myeloma cell line NS0-derived recombinant human CD8 α Ser22-Val198 Accession # NP_741969
Formulation	Lyophilized from a 0.2 μ m filtered solution in PBS with Trehalose. See Certificate of Analysis for details. *Small pack size (-SP) is supplied either lyophilized or as a 0.2 μ m filtered solution in PBS.

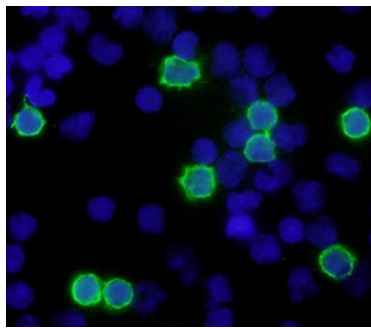
APPLICATIONS

Please Note: Optimal dilutions should be determined by each laboratory for each application. *General Protocols* are available in the *Technical Information* section on our website.

	Recommended Concentration	Sample
Flow Cytometry	2.5 μ g/10 ⁶ cells	Human whole blood lymphocytes
Immunocytochemistry	8-25 μ g/mL	See Below
CyTOF-ready	Ready to be labeled using established conjugation methods. No BSA or other carrier proteins that could interfere with conjugation.	

DATA

Immunocytochemistry



CD8 α in Human PBMCs. CD8 α was detected in immersion fixed human peripheral blood mononuclear cells using Mouse Anti-Human CD8 α Monoclonal Antibody (Catalog # MAB1509) at 10 μ g/mL for 3 hours at room temperature. Cells were stained using the NorthernLights™ 493-conjugated Anti-Mouse IgG Secondary Antibody (green; Catalog # NL009) and counterstained with DAPI (blue). Specific staining was localized to cell surfaces. View our protocol for [Fluorescent ICC Staining of Non-adherent Cells](#).

PREPARATION AND STORAGE

Reconstitution	Reconstitute at 0.5 mg/mL in sterile PBS.
Shipping	The product is shipped at ambient temperature. Upon receipt, store it immediately at the temperature recommended below. *Small pack size (-SP) is shipped with polar packs. Upon receipt, store it immediately at -20 to -70 °C
Stability & Storage	Use a manual defrost freezer and avoid repeated freeze-thaw cycles. <ul style="list-style-type: none"> ● 12 months from date of receipt, -20 to -70 °C as supplied. ● 1 month, 2 to 8 °C under sterile conditions after reconstitution. ● 6 months, -20 to -70 °C under sterile conditions after reconstitution.

BACKGROUND

CD8 is a heterodimeric glycoprotein consisting of an α and β chain. It is expressed on cytolytic T cells and functions in conjunction with the T cell receptor in the recognition of MHC/peptide complexes.