

DESCRIPTION

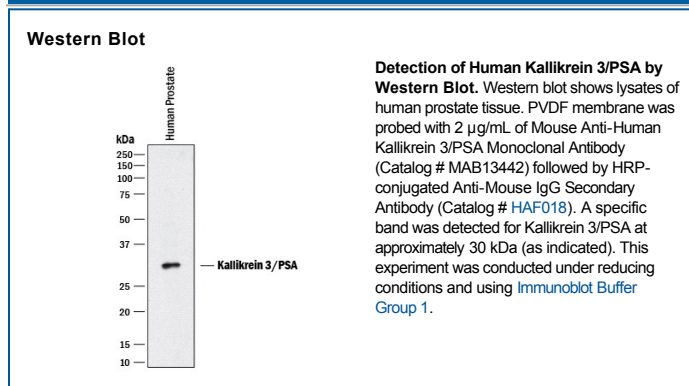
Species Reactivity	Human
Specificity	Detects human Kallikrein 3/PSA in sandwich immunoassays and in Western blots.
Source	Monoclonal Mouse IgG _{2A} Clone # 181811
Purification	Protein A or G purified from hybridoma culture supernatant
Immunogen	Mouse myeloma cell line NS0-derived recombinant human Kallikrein 3/PSA Pro19-Pro261 Accession # P07288
Formulation	Lyophilized from a 0.2 µm filtered solution in PBS and NaCl with Trehalose. See Certificate of Analysis for details. *Small pack size (-SP) is supplied as a 0.2 µm filtered solution in PBS.

APPLICATIONS

Please Note: Optimal dilutions should be determined by each laboratory for each application. *General Protocols* are available in the *Technical Information* section on our website.

	Recommended Concentration	Sample
Western Blot	2 µg/mL	See Below
Human Kallikrein 3/PSA Sandwich Immunoassay		Reagent
ELISA Capture	2-8 µg/mL	Human Kallikrein 3/PSA Antibody (Catalog # MAB13442)
ELISA Detection Standard	0.1-0.4 µg/mL	Human Kallikrein 3/PSA Biotinylated Antibody (Catalog # BAF1344) Recombinant Human Kallikrein 3/PSA (Catalog # 1344-SE)

DATA



PREPARATION AND STORAGE

Reconstitution	Reconstitute at 0.5 mg/mL in sterile PBS.
Shipping	The product is shipped at ambient temperature. Upon receipt, store it immediately at the temperature recommended below. *Small pack size (-SP) is shipped with polar packs. Upon receipt, store it immediately at -20 to -70 °C
Stability & Storage	Use a manual defrost freezer and avoid repeated freeze-thaw cycles. <ul style="list-style-type: none"> ● 12 months from date of receipt, -20 to -70 °C as supplied. ● 1 month, 2 to 8 °C under sterile conditions after reconstitution. ● 6 months, -20 to -70 °C under sterile conditions after reconstitution.

BACKGROUND

Kallikrein 3 (KLK-3) is a member of the Kallikrein family of serine proteases. It is also known as PSA (prostate specific antigen) and is used in prostate cancer diagnosis.