

DESCRIPTION

Species Reactivity	Human
Specificity	Detects human WIF-1 in Western blots. In Western blots, less than 5% cross-reactivity with recombinant mouse WIF-1 is observed.
Source	Monoclonal Mouse IgG ₁ Clone # 133015
Purification	Protein A or G purified from hybridoma culture supernatant
Immunogen	Mouse myeloma cell line NS0-derived recombinant human WIF-1 Gly29-Trp379 Accession # AAD25402
Formulation	Lyophilized from a 0.2 µm filtered solution in PBS with Trehalose. See Certificate of Analysis for details. *Small pack size (-SP) is supplied as a 0.2 µm filtered solution in PBS.

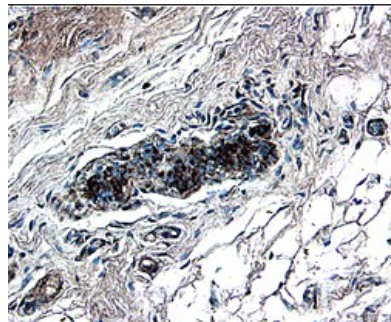
APPLICATIONS

Please Note: Optimal dilutions should be determined by each laboratory for each application. General Protocols are available in the Technical Information section on our website.

	Recommended Concentration	Sample
Western Blot	1 µg/mL	Recombinant Human WIF-1 (Catalog # 1341-WF)
Immunohistochemistry	8-25 µg/mL	See Below

DATA

Immunohistochemistry



WIF-1 in Human Breast. WIF-1 was detected in immersion fixed paraffin-embedded sections of human breast using 8 µg/mL Mouse Anti-Human WIF-1 Monoclonal Antibody (Catalog # MAB134) overnight at 4 °C. Tissue was stained with the Anti-Mouse HRP-DAB Cell & Tissue Staining Kit (brown; Catalog # CTS002) and counterstained with hematoxylin (blue). View our protocol for [Chromogenic IHC Staining of Paraffin-embedded Tissue Sections](#).

PREPARATION AND STORAGE

Reconstitution	Reconstitute at 0.5 mg/mL in sterile PBS.
Shipping	The product is shipped at ambient temperature. Upon receipt, store it immediately at the temperature recommended below. *Small pack size (-SP) is shipped with polar packs. Upon receipt, store it immediately at -20 to -70 °C
Stability & Storage	Use a manual defrost freezer and avoid repeated freeze-thaw cycles. <ul style="list-style-type: none"> ● 12 months from date of receipt, -20 to -70 °C as supplied. ● 1 month, 2 to 8 °C under sterile conditions after reconstitution. ● 6 months, -20 to -70 °C under sterile conditions after reconstitution.

BACKGROUND

WIF-1 is a secreted protein that binds Wnt proteins and antagonizes Wnt-induced signaling. WIF-1 expression is down regulated in several human cancers.