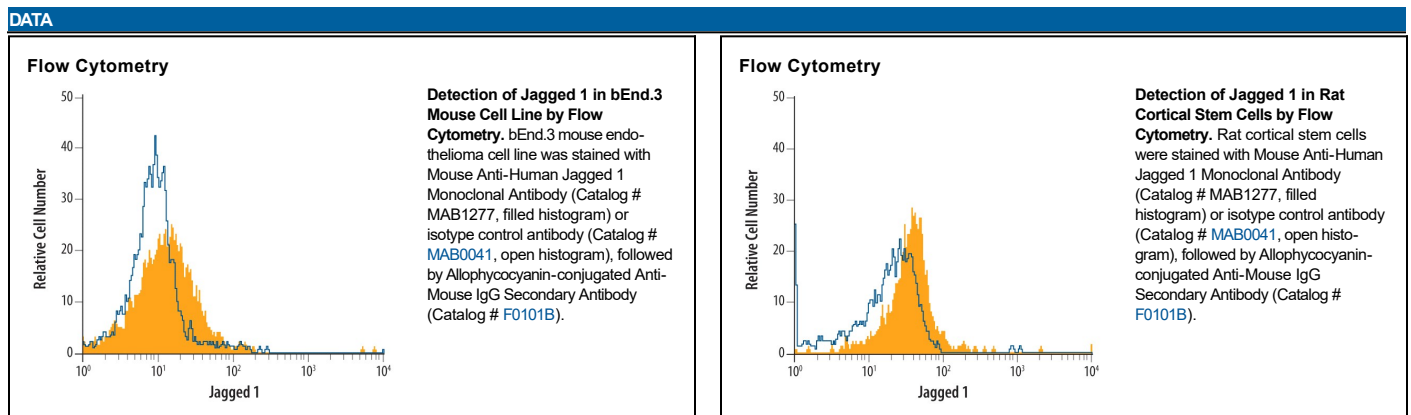


DESCRIPTION	
Species Reactivity	Human/Mouse/Rat
Specificity	Detects human, mouse, and rat Jagged 1. In direct ELISAs, no cross-reactivity with recombinant human Jagged 2 is observed. Stains human Jagged 1 transfectants but not the parental cell line or human Jagged 2 transfectants in flow cytometry.
Source	Monoclonal Mouse IgG _{2B} Clone # 188331
Purification	Protein A or G purified from hybridoma culture supernatant
Immunogen	NS0-derived recombinant human Jagged 1 Ser32-Asp296 Accession # P78504
Formulation	Lyophilized from a 0.2 µm filtered solution in PBS with Trehalose. See Certificate of Analysis for details. *Small pack size (-SP) is supplied either lyophilized or as a 0.2 µm filtered solution in PBS.

APPLICATIONS		
Please Note: Optimal dilutions should be determined by each laboratory for each application. <i>General Protocols</i> are available in the <i>Technical Information</i> section on our website.		
	Recommended Concentration	Sample
Flow Cytometry	2.5 µg/10 ⁶ cells	See Below
CyTOF-ready	Ready to be labeled using established conjugation methods. No BSA or other carrier proteins that could interfere with conjugation.	



PREPARATION AND STORAGE	
Reconstitution	Reconstitute at 0.5 mg/mL in sterile PBS.
Shipping	The product is shipped at ambient temperature. Upon receipt, store it immediately at the temperature recommended below. *Small pack size (-SP) is shipped with polar packs. Upon receipt, store it immediately at -20 to -70 °C
Stability & Storage	Use a manual defrost freezer and avoid repeated freeze-thaw cycles. <ul style="list-style-type: none"> ● 12 months from date of receipt, -20 to -70 °C as supplied. ● 1 month, 2 to 8 °C under sterile conditions after reconstitution. ● 6 months, -20 to -70 °C under sterile conditions after reconstitution.

BACKGROUND

Jagged 1 is a 180 kDa type I transmembrane glycoprotein and member of the Delta-Serrate-Lag-2 (DSL) family of ligands that activate LIN12/Notch proteins. Human Jagged 1 is synthesized as a 1218 amino acid (aa) precursor that contains a 33 aa signal sequence, a 1034 aa extracellular domain (ECD), a 26 aa transmembrane segment, and a 125 aa cytoplasmic region. The ECD contains a DSL domain (aa 185-229), a cysteine-rich region, 15 EGF-like repeats, of which many bind calcium, and nine potential sites for N-linked glycosylation. Mature human Jagged 1 shares 97% and 96% aa identity with mature mouse and rat Jagged 1, respectively. Jagged 1 is widely expressed in adult and fetal tissues. Jagged-Notch signaling specifies cell fate, regulates pattern formation, defines boundaries between different cell types, and modulates cell proliferation and differentiation, especially during hematopoiesis, myogenesis, neurogenesis, and development of vasculature (1-8). Mutations in human Jagged 1 are the cause of Alagille syndrome, an autosomal-dominant disorder characterized by intrahepatic cholestasis and abnormalities of heart, eye, vertebrae, as well as characteristic facial appearance (9, 10).

References:

1. Sainson, R.C. and A.L. Harris (2008) *Angiogenesis* **11**:41.
2. Cordle, J. *et al.* (2008) *Nat. Struct. Mol. Biol.* **15**:849.
3. Artavamis-Tsokanas, S. *et al.* (1999) *Science* **284**:770.
4. Lai, E.C. (2004) *Development* **131**:965.
5. Milner, L.A. *et al.* (1994) *Blood* **83**:2057.
6. Nyfeler, Y. *et al.* (2005) *EMBO J.* **24**:3504.
7. Linheng, L. *et al.* (1998) *Immunity* **8**:43.
8. Iso, T. *et al.* (2003) *Arterioscler. Thromb. Vasc. Biol.* **23**:543.
9. Oda, T. *et al.* (1997) *Nat. Genet.* **16**:235.
10. Oda, T. *et al.* (1997) *Genomics* **43**:376.