

DESCRIPTION

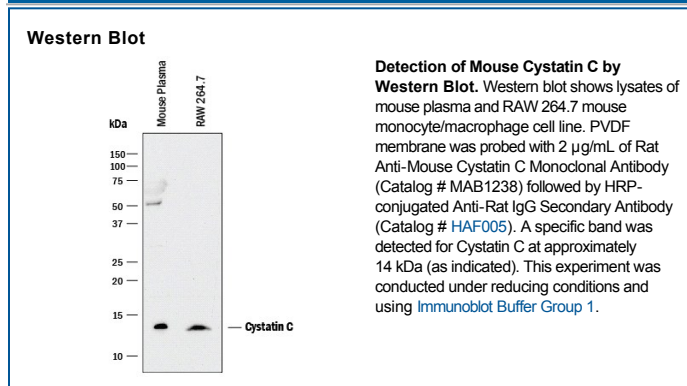
Species Reactivity	Mouse
Specificity	Detects recombinant mouse (rm) Cystatin C in direct ELISAs and Western blots. In direct ELISAs and Western blots, 100% cross-reactivity with recombinant human (rh) Cystatin C is observed, but no cross-reactivity with rhCystatins A, D, S, SA or SN, rmCystatins B or EM, rhFetuin B, rmFetuin A, rhHPRG, or rhKininogen is observed.
Source	Monoclonal Rat IgG _{2B} Clone # 207103
Purification	Protein A or G purified from hybridoma culture supernatant
Immunogen	Mouse myeloma cell line NS0-derived recombinant mouse Cystatin C aa 21-140 Accession # P21460
Formulation	Lyophilized from a 0.2 µm filtered solution in PBS with Trehalose. See Certificate of Analysis for details. *Small pack size (-SP) is supplied as a 0.2 µm filtered solution in PBS.

APPLICATIONS

Please Note: Optimal dilutions should be determined by each laboratory for each application. *General Protocols* are available in the *Technical Information* section on our website.

	Recommended Concentration	Sample
Western Blot	2 µg/mL	See Below

DATA



PREPARATION AND STORAGE

Reconstitution	Reconstitute at 0.5 mg/mL in sterile PBS.
Shipping	The product is shipped at ambient temperature. Upon receipt, store it immediately at the temperature recommended below. *Small pack size (-SP) is shipped with polar packs. Upon receipt, store it immediately at -20 to -70 °C
Stability & Storage	Use a manual defrost freezer and avoid repeated freeze-thaw cycles. <ul style="list-style-type: none"> ● 12 months from date of receipt, -20 to -70 °C as supplied. ● 1 month, 2 to 8 °C under sterile conditions after reconstitution. ● 6 months, -20 to -70 °C under sterile conditions after reconstitution.

BACKGROUND

Cystatin C is an inhibitor of cysteine proteases including Cathepsins B, H, K, L, and S. It is ubiquitous in mouse tissues with highest expression levels in brain.