

DESCRIPTION

Species Reactivity	Human
Specificity	Detects a synthetic peptide specific for human Claudin-11 around amino acid 200 in Direct ELISA.
Source	Monoclonal Mouse IgG _{2B} Clone # 1102132
Purification	Protein A or G purified from hybridoma culture supernatant
Immunogen	Synthetic Peptide Accession # O75508
Formulation	Lyophilized from a 0.2 µm filtered solution in PBS with Trehalose.

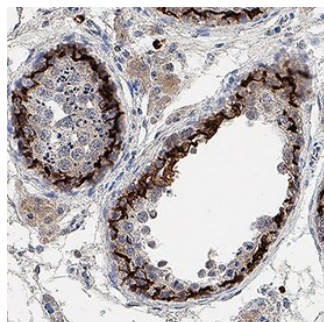
APPLICATIONS

Please Note: Optimal dilutions should be determined by each laboratory for each application. [General Protocols](#) are available in the Technical Information section on our website.

	Recommended Concentration	Sample
Immunohistochemistry	3-25 µg/mL	Immersion fixed paraffin-embedded sections of human testis

DATA

Immunohistochemistry



Detection of Claudin-11 in Human Testis. Claudin-11 was detected in immersion fixed paraffin-embedded sections of human testis using Mouse Anti-Human Claudin-11 Monoclonal Antibody (Catalog # MAB11716) at 5 µg/ml for 1 hour at room temperature followed by incubation with the Anti-Mouse IgG VisUCyte™ HRP Polymer Antibody (Catalog # VC001) or the HRP-conjugated Anti-Mouse IgG Secondary Antibody (Catalog # HAF007). Before incubation with the primary antibody, tissue was subjected to heat-induced epitope retrieval using VisUCyte Antigen Retrieval Reagent-Basic (Catalog # VCTS021). Tissue was stained using DAB (brown) and counterstained with hematoxylin (blue). Specific staining was localized to the cell surface. View our protocol for [IHC Staining with VisUCyte HRP Polymer Detection Reagents](#).

PREPARATION AND STORAGE

Reconstitution	Reconstitute lyophilized material at 0.2 mg/ml in sterile PBS. For liquid material, refer to CoA for concentration.
Shipping	Lyophilized product is shipped at ambient temperature. Liquid small pack size (-SP) is shipped with polar packs. Upon receipt, store immediately at the temperature recommended below.
Stability & Storage	Use a manual defrost freezer and avoid repeated freeze-thaw cycles. <ul style="list-style-type: none"> 12 months from date of receipt, -20 to -70 °C as supplied. 1 month, 2 to 8 °C under sterile conditions after reconstitution. 6 months, -20 to -70 °C under sterile conditions after reconstitution.

BACKGROUND

Claudin-11 is a 207 amino acid multipass membrane protein in the claudin family of epithelial tight junction proteins. Claudin-11 is widely expressed and is involved in epithelial remodeling during spermatogenesis and inner ear mechanotransduction. Claudin-11 is up-regulated in some cancers. Human Claudin-11 shares 94% aa sequence identity with mouse and rat Claudin-11.