

**DESCRIPTION**

<b>Species Reactivity</b>	Human
<b>Specificity</b>	Detects a peptide specific for Somatostatin-28 in Direct ELISA.
<b>Source</b>	Recombinant Monoclonal Rabbit IgG Clone # 2957D
<b>Purification</b>	Protein A or G purified from hybridoma culture supernatant
<b>Immunogen</b>	Synthetic Peptide Accession # P61278
<b>Formulation</b>	Lyophilized from a 0.2 µm filtered solution in PBS with Trehalose.

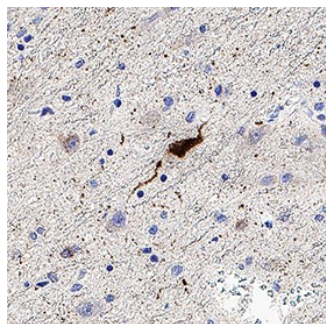
**APPLICATIONS**

**Please Note:** Optimal dilutions should be determined by each laboratory for each application. *General Protocols* are available in the *Technical Information* section on our website.

	<b>Recommended Concentration</b>	<b>Sample</b>
<b>Immunohistochemistry</b>	1-10 µg/mL	Immersion fixed paraffin-embedded sections of human hypothalamus

**DATA**

**Immunohistochemistry**



**Detection of Somatostatin in Human Hypothalamus.**

Somatostatin was detected in immersion fixed paraffin-embedded sections of human hypothalamus using Rabbit Anti-Human Somatostatin Monoclonal Antibody (Catalog # MAB11635) at 3 µg/ml for 1 hour at room temperature followed by incubation with the Anti-Rabbit IgG VisUCyte™ HRP Polymer Antibody (Catalog # VC003). Before incubation with the primary antibody, tissue was subjected to heat-induced epitope retrieval using VisUCyte Antigen Retrieval Reagent-Basic (Catalog # VCTS021). Tissue was stained using DAB (brown) and counterstained with hematoxylin (blue). Specific staining was localized to the cytoplasm. View our protocol for IHC Staining with VisUCyte HRP Polymer Detection Reagents.

**PREPARATION AND STORAGE**

<b>Reconstitution</b>	Reconstitute lyophilized material at 0.2 mg/ml in sterile PBS. For liquid material, refer to CoA for concentration.
<b>Shipping</b>	Lyophilized product is shipped at ambient temperature. Liquid small pack size (-SP) is shipped with polar packs. Upon receipt, store immediately at the temperature recommended below.
<b>Stability &amp; Storage</b>	<b>Use a manual defrost freezer and avoid repeated freeze-thaw cycles.</b> <ul style="list-style-type: none"> <li>• 12 months from date of receipt, -20 to -70 °C as supplied.</li> <li>• 1 month, 2 to 8 °C under sterile conditions after reconstitution.</li> <li>• 6 months, -20 to -70 °C under sterile conditions after reconstitution.</li> </ul>

**BACKGROUND**

Somatostatin (SST), also known as SMST, is a 116 amino acid (aa) peptide hormone protein and shares 96% aa identity with mouse and rat SST. It exists as a preproprotein that is cleaved into a proprotein form and then subsequently into 14 aa and 28 aa active peptide forms. SST is secreted by many tissues throughout the body and inhibits the secretion of many other hormones. Some of its major roles are inhibiting growth hormone secretion by the pituitary gland, insulin and glucagon secretion in pancreatic islets, and secretion of gastrointestinal tract hormones such as gastrin. Additionally, SST has been shown to have neuromodulatory activity.