

DESCRIPTION

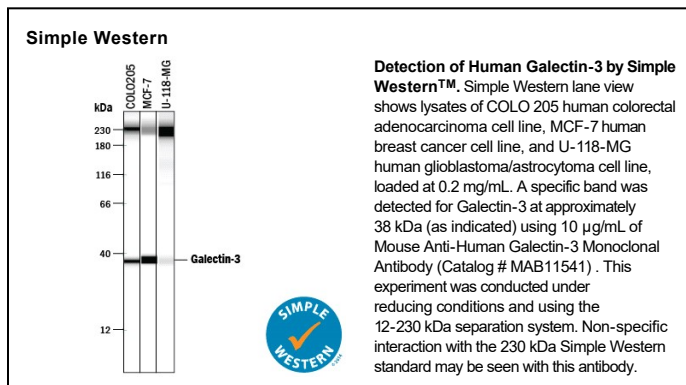
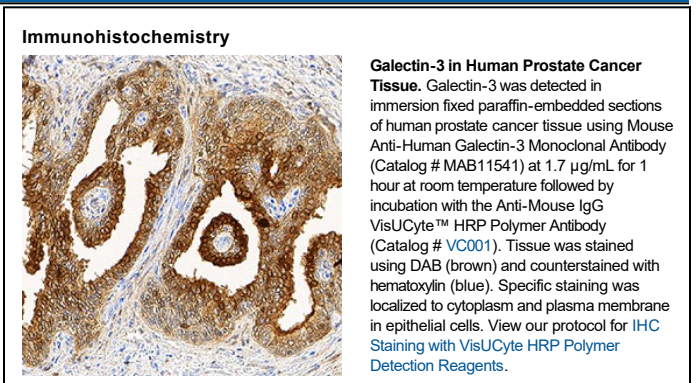
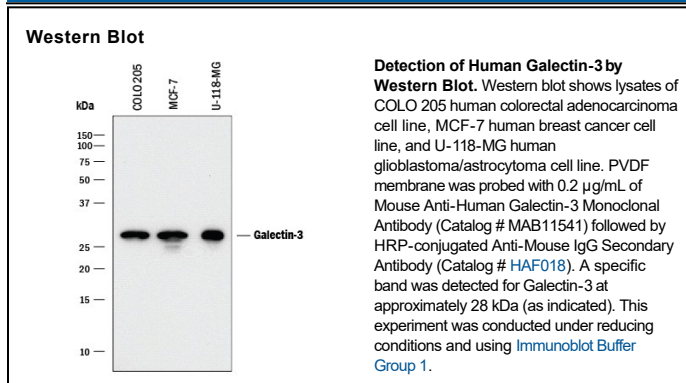
Species Reactivity	Human
Specificity	Detects human Galectin-3 in ELISAs. In sandwich immunoassays, no cross-reactivity with recombinant human Galectin-1, 2, 4, 7, 8, or 10 is observed.
Source	Monoclonal Mouse IgG _{2B} Clone # 194805
Purification	Protein A or G purified from hybridoma culture supernatant
Immunogen	<i>E. coli</i> -derived recombinant human Galectin-3 Ala2-Ile250 Accession # P17931.5
Formulation	Lyophilized from a 0.2 µm filtered solution in PBS with Trehalose. See Certificate of Analysis for details. *Small pack size (-SP) is supplied either lyophilized or as a 0.2 µm filtered solution in PBS.

APPLICATIONS

Please Note: Optimal dilutions should be determined by each laboratory for each application. *General Protocols* are available in the *Technical Information* section on our website.

	Recommended Concentration	Sample
Western Blot	0.2 µg/mL	See Below
Immunohistochemistry	1-25 µg/mL	See Below
Simple Western	10 µg/mL	See Below
Human Galectin-3 Sandwich Immunoassay		Reagent
ELISA Capture	2-8 µg/mL	Human Galectin-3 Antibody (Catalog # MAB11541)
ELISA Detection	0.1-0.4 µg/mL	Human Galectin-3 Biotinylated Antibody (Catalog # BAF1154)
Standard		Recombinant Human Galectin-3 (Catalog # 1154-GA)

DATA



PREPARATION AND STORAGE

Reconstitution Reconstitute at 0.5 mg/mL in sterile PBS.

Shipping The product is shipped at ambient temperature. Upon receipt, store it immediately at the temperature recommended below.
*Small pack size (-SP) is shipped with polar packs. Upon receipt, store it immediately at -20 to -70 °C

Stability & Storage Use a manual defrost freezer and avoid repeated freeze-thaw cycles.

- 12 months from date of receipt, -20 to -70 °C as supplied.
- 1 month, 2 to 8 °C under sterile conditions after reconstitution.
- 6 months, -20 to -70 °C under sterile conditions after reconstitution.

BACKGROUND

Galectin-3, also known as Mac-2, L29, CBP35 and εBP, is a member of a large family of carbohydrate-binding proteins with specificity for N-acetyl-lactosamine-containing glycoproteins. At least 14 mammalian galectins, which share structural similarities in their carbohydrate recognition domains (CRD), have been identified to date. Galectin-3 is expressed in tumor cells, macrophages, activated T cells, osteoclasts, epithelial cells and fibroblasts.