

DESCRIPTION

| | |
|---------------------------|--|
| Species Reactivity | Human |
| Specificity | Detects human Activin C in direct ELISAs. |
| Source | Monoclonal Mouse IgG _{2B} Clone # 1077920 |
| Purification | Protein A or G purified from hybridoma culture supernatant |
| Immunogen | <i>E. coli</i> -derived recombinant human Activin C Gly237-Ser352 Accession # P55103 |
| Formulation | Lyophilized from a 0.2 µm filtered solution in PBS with Trehalose. |

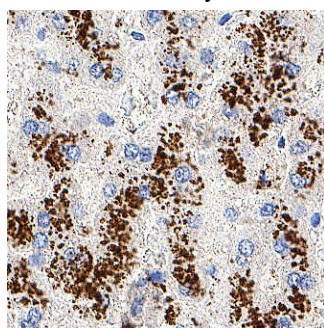
APPLICATIONS

Please Note: Optimal dilutions should be determined by each laboratory for each application. *General Protocols* are available in the Technical Information section on our website.

| | Recommended Concentration | Sample |
|-----------------------------|----------------------------------|---|
| Immunocytochemistry | 3-25 µg/mL | fixed HepG2 human hepatocellular carcinoma cell line (Positive) and absent in THP-1 human acute monocytic leukemia cell line (Negative) |
| Immunohistochemistry | 3-25 µg/mL | Immersion fixed paraffin-embedded sections of human liver |

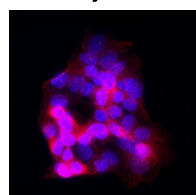
DATA

Immunohistochemistry

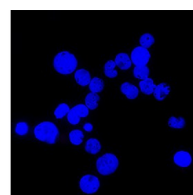


Detection of Activin C in Human Liver. Activin C was detected in immersion fixed paraffin-embedded sections of human liver using Mouse Anti-Human Activin C Monoclonal Antibody (Catalog # MAB11501) at 5 µg/ml overnight at 4 °C. Before incubation with the primary antibody, tissue was subjected to heat-induced epitope retrieval using VisUCyte Antigen Retrieval Reagent-Basic (Catalog # VCTS021). Tissue was stained using the HRP-conjugated Anti-Mouse IgG Secondary Antibody (Catalog # HAF007) or Anti-Mouse IgG VisUCyte™ HRP Polymer Antibody (Catalog # VC001) and counterstained with hematoxylin (blue). Specific staining was localized to the cytoplasm of liver hepatocytes. View our protocol for [Chromogenic IHC Staining of Paraffin-embedded Tissue Sections](#).

Immunocytochemistry



HepG2 (Positive) cells



THP-1 (Negative) cells

Detection of Activin C in HepG2 cells (Positive) and THP-1 cells (Negative). Activin C was detected in fixed HepG2 human hepatocellular carcinoma cell line (Positive) and absent in THP-1 human acute monocytic leukemia cell line (Negative) using Mouse Anti-Human Activin C Monoclonal Antibody (Catalog # MAB11501) at 8 µg/ml for 3 hours at room temperature. Cells were stained using the NorthernLights™ 557-conjugated Anti-Mouse IgG Secondary Antibody (red; Catalog # NL007) and counterstained with DAPI (blue). Specific staining was localized to the cytoplasm. View our protocol for [Fluorescent ICC Staining of Cells on Coverslips](#).

PREPARATION AND STORAGE

| | |
|--------------------------------|--|
| Reconstitution | Reconstitute at 0.5 mg/mL in sterile PBS. |
| Shipping | The product is shipped at ambient temperature. Upon receipt, store it immediately at the temperature recommended below. |
| Stability & Storage | Use a manual defrost freezer and avoid repeated freeze-thaw cycles. <ul style="list-style-type: none"> 12 months from date of receipt, -20 to -70 °C as supplied. 1 month, 2 to 8 °C under sterile conditions after reconstitution. 6 months, -20 to -70 °C under sterile conditions after reconstitution. |

BACKGROUND

Activins belong to the TGF- β superfamily. They are homo- or heterodimers of Activin β subunits. At least four mammalian β subunits, A, B, C, and E, have been described. The β_C subunit homodimerizes to form Activin CC. A naturally occurring Activin AC heterodimer has also been reported (1).

References:

1. Mellor, S. *et al.* (2003) *Endocrinology* **144**:4410.