

**DESCRIPTION**

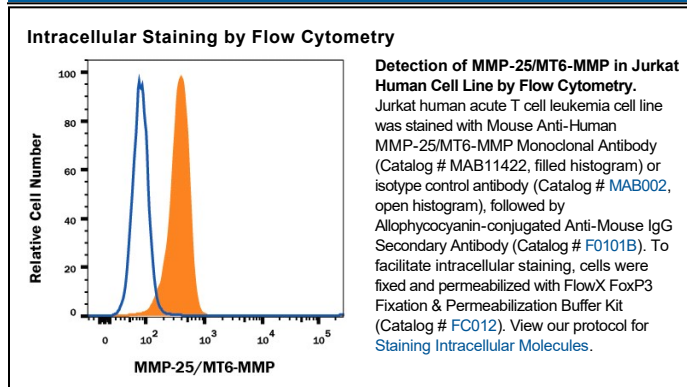
|                           |   |
|---------------------------|---|
| <b>Species Reactivity</b> | Human   |
| <b>Specificity</b>        | Detects human MMP-25/MT6-MMP in direct ELISAs.  |
| <b>Source</b>             | Monoclonal Mouse IgG <sub>1</sub> Clone # 141811  |
| <b>Purification</b>       | Protein A or G purified from hybridoma culture supernatant  |
| <b>Immunogen</b>          | Mouse myeloma cell line NS0-derived recombinant human MMP-25/MT6-MMP<br>Pro314-Cys508<br>Accession # Q9NPA2   |
| <b>Formulation</b>        | Lyophilized from a 0.2 µm filtered solution in PBS with Trehalose. See Certificate of Analysis for details.<br>*Small pack size (-SP) is supplied either lyophilized or as a 0.2 µm filtered solution in PBS. |

**APPLICATIONS**

Please Note: Optimal dilutions should be determined by each laboratory for each application. General Protocols are available in the Technical Information section on our website.

|   | <b>Recommended Concentration</b>   | <b>Sample</b> |
|---|--|---------------|
| <b>Intracellular Staining by Flow Cytometry</b> | 0.25 µg/10 <sup>6</sup> cells  | See Below     |
| <b>CyTOF-ready</b>                              | Ready to be labeled using established conjugation methods. No BSA or other carrier proteins that could interfere with conjugation. |               |

**DATA**



**PREPARATION AND STORAGE**

|                                |  |
|--------------------------------|--|
| <b>Reconstitution</b>          | Reconstitute at 0.5 mg/mL in sterile PBS.  |
| <b>Shipping</b>                | The product is shipped at ambient temperature. Upon receipt, store it immediately at the temperature recommended below.<br>*Small pack size (-SP) is shipped with polar packs. Upon receipt, store it immediately at -20 to -70 °C   |
| <b>Stability &amp; Storage</b> | <b>Use a manual defrost freezer and avoid repeated freeze-thaw cycles.</b> <ul style="list-style-type: none"> <li>● 12 months from date of receipt, -20 to -70 °C as supplied.</li> <li>● 1 month, 2 to 8 °C under sterile conditions after reconstitution.</li> <li>● 6 months, -20 to -70 °C under sterile conditions after reconstitution.</li> </ul> |

**BACKGROUND**

MMP-25, also known as MT6-MMP or Leukolysin, is a GPI-linked protease expressed by neutrophils. MMP-25 cleaves collagen type 4, gelatin, fibronectin, and fibrin.