

DESCRIPTION

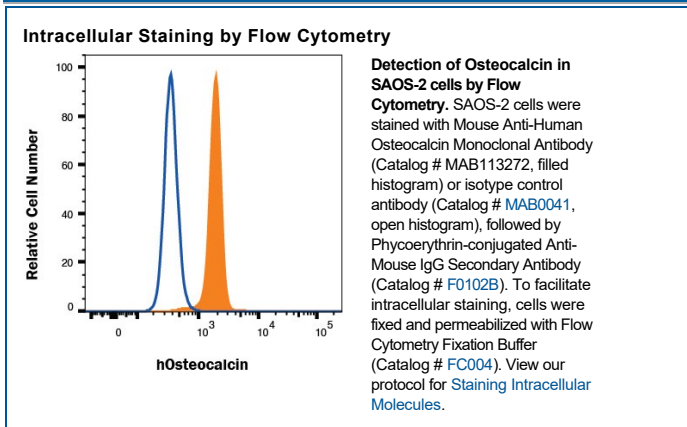
Species Reactivity	Human
Specificity	Detects human Osteocalcin in direct ELISA.
Source	Monoclonal Mouse IgG _{2B} Clone # 582014
Purification	Protein A or G purified from hybridoma culture supernatant
Immunogen	Osteocalcin/KLH containing peptide Accession # P02818
Formulation	Lyophilized from a 0.2 µm filtered solution in PBS with Trehalose. See Certificate of Analysis for details. *Small pack size (-SP) is supplied either lyophilized or as a 0.2 µm filtered solution in PBS.

APPLICATIONS

Please Note: Optimal dilutions should be determined by each laboratory for each application. *General Protocols* are available in the *Technical Information* section on our website.

	Recommended Concentration	Sample
Intracellular Staining by Flow Cytometry	0.25 µg/10 ⁶ cells	SAOS-2 cells fixed and permeabilized with Flow Cytometry Fixation Buffer (Catalog # FC004).

DATA



PREPARATION AND STORAGE

Reconstitution	Reconstitute at 0.5 mg/mL in sterile PBS.
Shipping	The product is shipped at ambient temperature. Upon receipt, store it immediately at the temperature recommended below. *Small pack size (-SP) is shipped with polar packs. Upon receipt, store it immediately at -20 to -70 °C
Stability & Storage	Use a manual defrost freezer and avoid repeated freeze-thaw cycles. <ul style="list-style-type: none"> • 12 months from date of receipt, -20 to -70 °C as supplied. • 1 month, 2 to 8 °C under sterile conditions after reconstitution. • 6 months, -20 to -70 °C under sterile conditions after reconstitution.

BACKGROUND

Osteocalcin, also known as Bone γ-Carboxyglutamic Acid Protein, is a secreted protein whose expression is restricted to cells of the osteoblast lineage (1). It has been frequently used as a marker for osteoblast lineage cells.

References:

1. Lian, J.B. *et al.* (1999) *Vitamin. Horm.* **55**:443.