

## DESCRIPTION

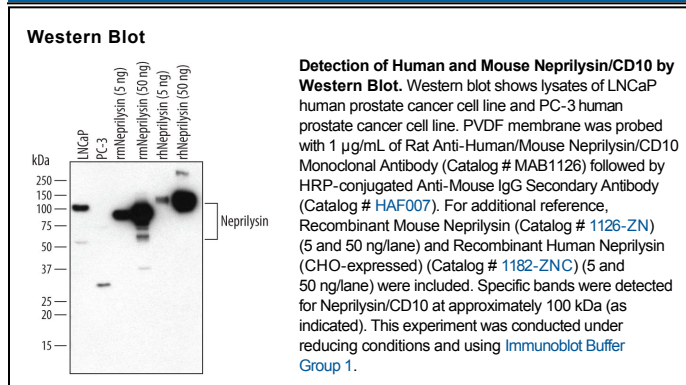
<b>Species Reactivity</b>	Human/Mouse
<b>Specificity</b>	Detects human and mouse Neprilysin/CD10 in direct ELISAs and Western blots. In direct ELISAs, no cross-reactivity with recombinant human ECE-2 or recombinant mouse Kell is observed.
<b>Source</b>	Monoclonal Rat IgG <sub>2B</sub> Clone # 200103
<b>Purification</b>	Protein A or G purified from hybridoma culture supernatant
<b>Immunogen</b>	<i>S. frugiperda</i> insect ovarian cell line Sf 21-derived recombinant mouse Neprilysin/CD10 Tyr52-Trp750 Accession # Q61391
<b>Formulation</b>	Lyophilized from a 0.2 µm filtered solution in PBS with Trehalose. See Certificate of Analysis for details. *Small pack size (-SP) is supplied as a 0.2 µm filtered solution in PBS.

## APPLICATIONS

**Please Note:** Optimal dilutions should be determined by each laboratory for each application. *General Protocols* are available in the *Technical Information* section on our website.

	Recommended Concentration	Sample
<b>Western Blot</b>	1 µg/mL	See Below
<b>Immunohistochemistry</b>	8-25 µg/mL	Perfusion fixed paraffin-embedded sections of mouse brain (hippocampus) and spinal cord

## DATA



## PREPARATION AND STORAGE

<b>Reconstitution</b>	Reconstitute at 0.5 mg/mL in sterile PBS.
<b>Shipping</b>	The product is shipped at ambient temperature. Upon receipt, store it immediately at the temperature recommended below. *Small pack size (-SP) is shipped with polar packs. Upon receipt, store it immediately at -20 to -70 °C
<b>Stability &amp; Storage</b>	<b>Use a manual defrost freezer and avoid repeated freeze-thaw cycles.</b> <ul style="list-style-type: none"> <li>● 12 months from date of receipt, -20 to -70 °C as supplied.</li> <li>● 1 month, 2 to 8 °C under sterile conditions after reconstitution.</li> <li>● 6 months, -20 to -70 °C under sterile conditions after reconstitution.</li> </ul>

## BACKGROUND

Neprilysin is also known as CALLA and CD10. It is a zinc metalloprotease expressed at the cell surface that cleaves a variety of bioactive peptides such as enkephalins, atrial natriuretic peptide and amyloid β peptide.