

## DESCRIPTION

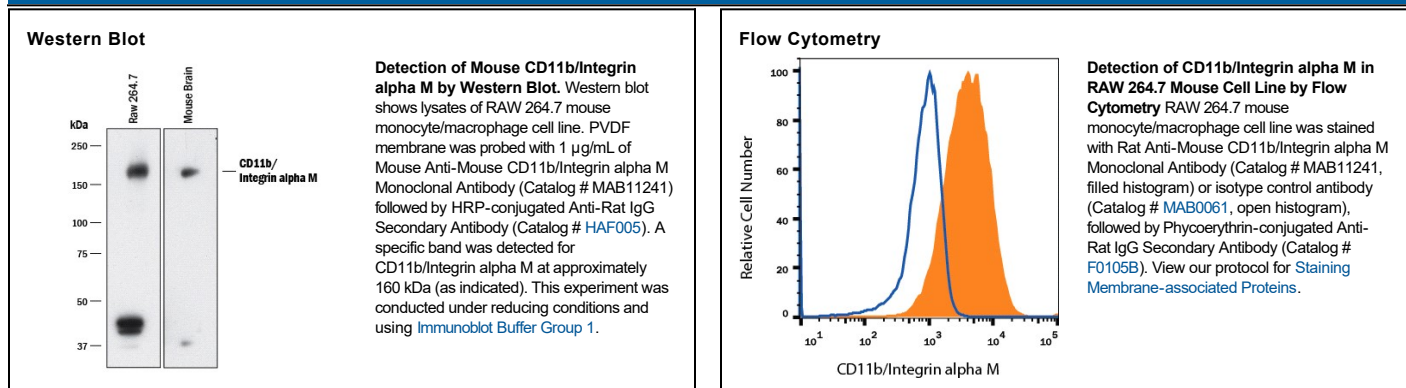
<b>Species Reactivity</b>	Mouse
<b>Specificity</b>	Detects recombinant mouse CD11b/Integrin alpha M in Western blot.
<b>Source</b>	Monoclonal Rat IgG <sub>2B</sub> Clone # 908649
<b>Purification</b>	Protein A or G purified from hybridoma culture supernatant
<b>Immunogen</b>	Chinese hamster ovary cell line CHO-derived recombinant mouse Integrin alpha M beta 2 Phe17-Asn1105 (Integrin alpha M), Gln24-Asn702 (Integrin beta 2) Accession # NP_032427 (Integrin alpha M) & P11835 (Integrin beta 2)
<b>Formulation</b>	Lyophilized from a 0.2 µm filtered solution in PBS with Trehalose. See Certificate of Analysis for details. *Small pack size (-SP) is supplied either lyophilized or as a 0.2 µm filtered solution in PBS.

## APPLICATIONS

**Please Note:** Optimal dilutions should be determined by each laboratory for each application. *General Protocols* are available in the *Technical Information* section on our website.

	Recommended Concentration	Sample
<b>Western Blot</b>	1 µg/mL	See Below
<b>Flow Cytometry</b>	0.25 µg/10 <sup>6</sup> cells	See Below

## DATA



## PREPARATION AND STORAGE

<b>Reconstitution</b>	Reconstitute at 0.5 mg/mL in sterile PBS.
<b>Shipping</b>	The product is shipped at ambient temperature. Upon receipt, store it immediately at the temperature recommended below. *Small pack size (-SP) is shipped with polar packs. Upon receipt, store it immediately at -20 to -70 °C
<b>Stability &amp; Storage</b>	<b>Use a manual defrost freezer and avoid repeated freeze-thaw cycles.</b> <ul style="list-style-type: none"> <li>• 12 months from date of receipt, -20 to -70 °C as supplied.</li> <li>• 1 month, 2 to 8 °C under sterile conditions after reconstitution.</li> <li>• 6 months, -20 to -70 °C under sterile conditions after reconstitution.</li> </ul>

## BACKGROUND

The Integrin family proteins are heterodimeric transmembrane receptors composed of an α and a β subunit. The Integrin αM subunit, also known as MAC-1α subunit or CD11b, combines with the Integrin β2 subunit (CD18) to form the non-covalent heterodimer Integrin αM/β2, also known as MAC-1 and complement receptor type 3 (CR3). Integrin αM/β2 is expressed on granulocytes, macrophages, dendritic cells and natural killer cells. Upon activation, αM/β2 can bind several ligands (including ICAM-1, fibrinogen, and the C3 complement fragment, C3bi) to mediate phagocyte adhesion, migration and ingestion of complement-opsonized particles (1,2).

### References:

1. Beller, D.J. *et al.* (1982) *J. Exp. Med.* **156**:1000.
2. Ault, K.A. and T.A. Springer (1981) *J. Immunol.* **126**:359.