

DESCRIPTION

Species Reactivity	Human
Specificity	Detects human GPR88 in direct ELISAs.
Source	Monoclonal Mouse IgG ₁ Clone # 1039830
Purification	Protein A or G purified from hybridoma culture supernatant
Immunogen	Human GPR88 synthetic peptide
Formulation	Lyophilized from a 0.2 µm filtered solution in PBS with Trehalose. See Certificate of Analysis for details. *Small pack size (-SP) is supplied either lyophilized or as a 0.2 µm filtered solution in PBS.

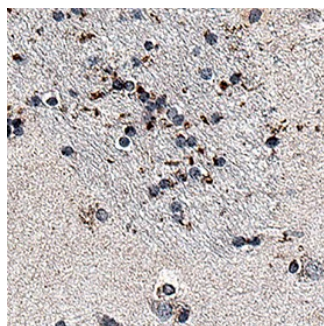
APPLICATIONS

Please Note: Optimal dilutions should be determined by each laboratory for each application. [General Protocols](#) are available in the Technical Information section on our website.

	Recommended Concentration	Sample
Immunohistochemistry	5-25 µg/mL	Immersion fixed paraffin-embedded sections of human brain (caudate nucleus)

DATA

Immunohistochemistry



GPR88 in Human Brain (Caudate Nucleus). GPR88 was detected in immersion fixed paraffin-embedded sections of human brain (caudate nucleus) using Mouse Anti-Human GPR88 Monoclonal Antibody (Catalog # MAB10828) at 5 µg/mL for 1 hour at room temperature followed by incubation with the Anti-Mouse IgG VisUCyte™ HRP Polymer Antibody (Catalog # VC001). Before incubation with the primary antibody, tissue was subjected to heat-induced epitope retrieval using Antigen Retrieval Reagent-Basic (Catalog # CTS013). Tissue was stained using DAB (brown) and counterstained with hematoxylin (blue). Specific staining was localized to neuronal cell bodies and processes. Staining was performed using our protocol for IHC Staining with VisUCyte HRP Polymer Detection Reagents.

PREPARATION AND STORAGE

Reconstitution	Reconstitute at 0.5 mg/mL in sterile PBS.
Shipping	The product is shipped at ambient temperature. Upon receipt, store it immediately at the temperature recommended below. *Small pack size (-SP) is shipped with polar packs. Upon receipt, store it immediately at -20 to -70 °C
Stability & Storage	Use a manual defrost freezer and avoid repeated freeze-thaw cycles. <ul style="list-style-type: none"> • 12 months from date of receipt, -20 to -70 °C as supplied. • 1 month, 2 to 8 °C under sterile conditions after reconstitution. • 6 months, -20 to -70 °C under sterile conditions after reconstitution.

BACKGROUND

GPR88 is an orphan receptor that probably belongs to the G-protein coupled receptor family. Ligands for this receptor still largely remain unknown but agonists have been discovered. It is a brain-specific receptor with almost exclusive expression in the striatum, being preferentially localized in medium spiny neurons. Because of its expression, GPR88 is emerging as a drug target for CNS disorders such as schizophrenia, Parkinson's disease, anxiety, and addiction. Gpr88 KO mice data suggests that striatal GPR88 receptors influence activity in a range of procedures integrated by prefrontal, orbitofrontal and anterior cingulate cortico-striatal-thalamic loops leading to altered cognitive, motivational and reward evaluation processes.