

**DESCRIPTION**

<b>Species Reactivity</b>	Human
<b>Specificity</b>	Detects human GHRHR in direct ELISAs.
<b>Source</b>	Monoclonal Mouse IgG <sub>2B</sub> Clone # 1037442
<b>Purification</b>	Protein A or G purified from hybridoma culture supernatant
<b>Immunogen</b>	Human GHRHR synthetic peptide Accession # Q02643
<b>Formulation</b>	Lyophilized from a 0.2 µm filtered solution in PBS with Trehalose. See Certificate of Analysis for details. *Small pack size (-SP) is supplied either lyophilized or as a 0.2 µm filtered solution in PBS.

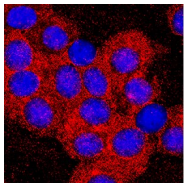
**APPLICATIONS**

**Please Note:** Optimal dilutions should be determined by each laboratory for each application. *General Protocols* are available in the *Technical Information* section on our website.

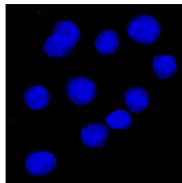
	<b>Recommended Concentration</b>	<b>Sample</b>
<b>Immunocytochemistry</b>	8-25 µg/mL	Immersion fixed HEK293 human embryonic kidney cell line transfected with GHRHR
<b>Immunohistochemistry</b>	5-25 µg/mL	Immersion fixed paraffin-embedded sections of human pituitary

**DATA**

**Immunocytochemistry**



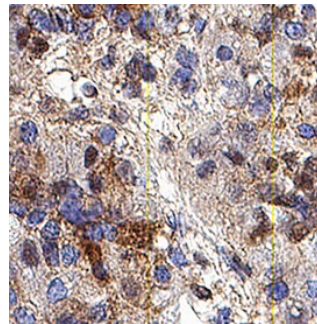
Positive (HEK293 transfected cells)



Negative (HEK293 cells)

**GHRHR in HEK293 Human Cell Line transfected with GHRHR.** GHRHR was detected in immersion fixed HEK293 human embryonic kidney cell line transfected with GHRHR (positive staining) and HEK293 human embryonic kidney cell line (non-transfected, negative staining) using Mouse Anti-Human GHRHR Monoclonal Antibody (Catalog # MAB107351) at 8 µg/mL for 3 hours at room temperature. Cells were stained using the NorthernLights™ 557-conjugated Anti-Mouse IgG Secondary Antibody (red; Catalog # NL007) and counterstained with DAPI (blue). Specific staining was localized to cell cytoplasm. Staining was performed using our protocol for Fluorescent ICC Staining of Non-adherent Cells.

**Immunohistochemistry**



**GHRHR in Human Pituitary.** GHRHR was detected in immersion fixed paraffin-embedded sections of human pituitary using Mouse Anti-Human GHRHR Monoclonal Antibody (Catalog # MAB107351) at 5 µg/mL for 1 hour at room temperature followed by incubation with the Anti-Mouse IgG VisUCyte™ HRP Polymer Antibody (Catalog # VC001). Before incubation with the primary antibody, tissue was subjected to heat-induced epitope retrieval using Antigen Retrieval Reagent-Basic (Catalog # CTS013). Tissue was stained using DAB (brown) and counterstained with hematoxylin (blue). Specific staining was localized to cell cytoplasm. Staining was performed using our protocol for IHC Staining with VisUCyte HRP Polymer Detection Reagents.

**PREPARATION AND STORAGE**

<b>Reconstitution</b>	Reconstitute at 0.5 mg/mL in sterile PBS.
<b>Shipping</b>	The product is shipped at ambient temperature. Upon receipt, store it immediately at the temperature recommended below. *Small pack size (-SP) is shipped with polar packs. Upon receipt, store it immediately at -20 to -70 °C
<b>Stability &amp; Storage</b>	<b>Use a manual defrost freezer and avoid repeated freeze-thaw cycles.</b> <ul style="list-style-type: none"> <li>• 12 months from date of receipt, -20 to -70 °C as supplied.</li> <li>• 1 month, 2 to 8 °C under sterile conditions after reconstitution.</li> <li>• 6 months, -20 to -70 °C under sterile conditions after reconstitution.</li> </ul>

**BACKGROUND**

GHRHR is a GPCR that binds growth hormone-releasing hormone that is expressed in the pituitary. Significant amounts of GHRHR are also found in the hypothalamus, kidney, and placenta. GHRH regulates the secretion of growth hormone that controls the metabolism and growth of every tissue through its binding with GHRHR. Malfunction in GHRHR signaling is associated with abnormal growth. GHRHR is a therapeutic target against dwarfism, gigantism, lipodystrophy, and certain cancers.