

DESCRIPTION	
<b>Species Reactivity</b>	Human
<b>Specificity</b>	Detects human PSGR in direct ELISAs.
<b>Source</b>	Monoclonal Mouse IgG <sub>1</sub> Clone # 1033009
<b>Purification</b>	Protein A or G purified from hybridoma culture supernatant
<b>Immunogen</b>	Human PSGR synthetic peptide Accession # Q9H255
<b>Formulation</b>	Lyophilized from a 0.2 µm filtered solution in PBS with Trehalose. See Certificate of Analysis for details. *Small pack size (-SP) is supplied either lyophilized or as a 0.2 µm filtered solution in PBS.

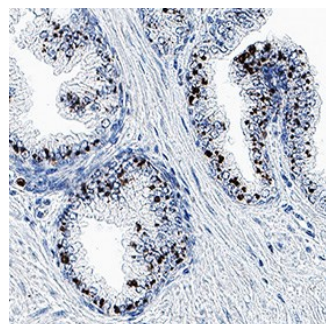
#### APPLICATIONS

**Please Note:** Optimal dilutions should be determined by each laboratory for each application. *General Protocols* are available in the *Technical Information* section on our website.

	Recommended Concentration	Sample
<b>Immunohistochemistry</b>	5-25 µg/mL	Immersion fixed paraffin-embedded sections of human normal prostate

#### DATA

##### Immunohistochemistry



**PSGR in Human Prostate.** PSGR was detected in immersion fixed paraffin-embedded sections of human normal prostate using Mouse Anti-Human PSGR Monoclonal Antibody (Catalog # MAB10669) at 5 µg/mL for 1 hour at room temperature followed by incubation with the Anti-Mouse IgG VisUCyte™ HRP Polymer Antibody (Catalog # VC001). Before incubation with the primary antibody, tissue was subjected to heat-induced epitope retrieval using Antigen Retrieval Reagent-Basic (Catalog # CTS013). Tissue was stained using DAB (brown) and counterstained with hematoxylin (blue). Specific staining was localized to cytoplasm in glandular epithelial cells. Staining was performed using our protocol for IHC Staining with VisUCyte HRP Polymer Detection Reagents.

#### PREPARATION AND STORAGE

<b>Reconstitution</b>	Reconstitute at 0.5 mg/mL in sterile PBS.
<b>Shipping</b>	The product is shipped at ambient temperature. Upon receipt, store it immediately at the temperature recommended below. *Small pack size (-SP) is shipped with polar packs. Upon receipt, store it immediately at -20 to -70 °C
<b>Stability &amp; Storage</b>	<b>Use a manual defrost freezer and avoid repeated freeze-thaw cycles.</b> <ul style="list-style-type: none"> <li>• 12 months from date of receipt, -20 to -70 °C as supplied.</li> <li>• 1 month, 2 to 8 °C under sterile conditions after reconstitution.</li> <li>• 6 months, -20 to -70 °C under sterile conditions after reconstitution.</li> </ul>

#### BACKGROUND

PSGR (OR51E2) is an olfactory receptor and part of a large family of GPCR's arising from single coding-exon genes. Odorant receptors represent the largest GPCR family in the human genome and are found to be ectopically expressed in non-sensory tissues mediating a variety of cellular functions. OR51E2 is well-characterized in prostate cancer and epidermal pigment cells and expressed in the cytosol and in the plasma membrane. OR51E2 is involved in the regulation of RPE cell growth and is a potential target for the treatment of proliferative disorders.