

DESCRIPTION

Species Reactivity	Human
Specificity	Detects human Integrin $\alpha 4 \beta 1$ in direct ELISAs. This non-therapeutic antibody uses the same variable region sequence as the therapeutic antibody Natalizumab. This product is for research use only.
Source	Recombinant Monoclonal Human IgG ₄ Clone # Hu114
Purification	Protein A or G purified from cell culture supernatant
Immunogen	Human Integrin $\alpha 4 \beta 1$
Formulation	Lyophilized from a 0.2 μ m filtered solution in PBS with Trehalose. See Certificate of Analysis for details. *Small pack size (-SP) is supplied either lyophilized or as a 0.2 μ m filtered solution in PBS.

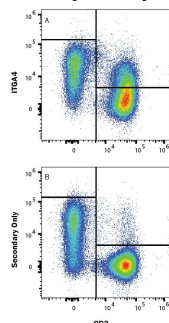
APPLICATIONS

Please Note: Optimal dilutions should be determined by each laboratory for each application. *General Protocols* are available in the *Technical Information* section on our website.

	Recommended Concentration	Sample
Flow Cytometry	0.25 μ g/10 ⁶ cells	Human PBMC
CyTOF-ready	Ready to be labeled using established conjugation methods. No BSA or other carrier proteins that could interfere with conjugation.	

DATA

Flow Cytometry



Detection of Integrin $\alpha 4 \beta 1$ in Human PBMC by Flow Cytometry. Human PBMC were stained with (A) Human Anti-Human Integrin $\alpha 4 \beta 1$ (Research Grade Natalizumab Biosimilar) Monoclonal Antibody (Catalog # MAB10603) or (B) no primary antibody, followed by anti-Human IgG APC-conjugated Secondary Antibody (Catalog # F0135) and Mouse anti-Human CD3 PE-conjugated Monoclonal Antibody (Catalog # FAB100P). Cells were stained using our Staining Membrane-associated Proteins protocol.

PREPARATION AND STORAGE

Reconstitution	Reconstitute at 0.5 mg/mL in sterile PBS. For liquid material, refer to CoA for concentration.
Shipping	Lyophilized product is shipped at ambient temperature. Liquid small pack size (-SP) is shipped with polar packs. Upon receipt, store immediately at the temperature recommended below.
Stability & Storage	Use a manual defrost freezer and avoid repeated freeze-thaw cycles. <ul style="list-style-type: none"> 12 months from date of receipt, -20 to -70 °C as supplied. 1 month, 2 to 8 °C under sterile conditions after reconstitution. 6 months, -20 to -70 °C under sterile conditions after reconstitution.

BACKGROUND

Natalizumab is a biosimilar directed against the extracellular domain of Human Integrin $\alpha 4 \beta 1$. It has been known to treat multiple sclerosis and Crohn's disease. Human Integrin $\alpha 4 \beta 1$ (Research Grade Natalizumab Biosimilar) Antibody is designed to be used in research use only.