

**DESCRIPTION**

<b>Specificity</b>	Selected for use as rabbit IgG isotype control for flow cytometry applications.
<b>Source</b>	Monoclonal Rabbit IgG Clone # 60024B
<b>Purification</b>	Protein A or G purified from cell culture supernatant
<b>Immunogen</b>	KLH
<b>Formulation</b>	Lyophilized from a 0.2 µm filtered solution in PBS with Trehalose. See Certificate of Analysis for details. *Small pack size (-SP) is supplied either lyophilized or as a 0.2 µm filtered solution in PBS.

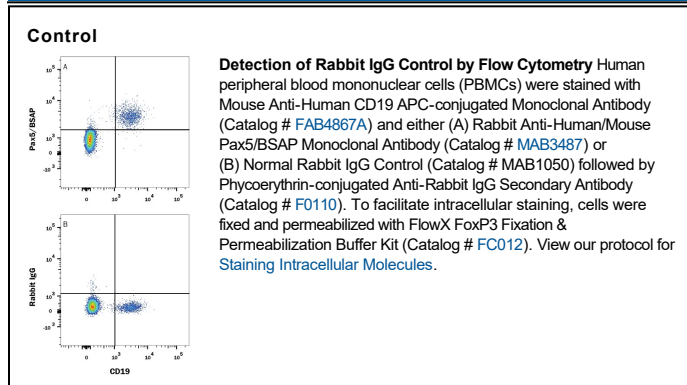
**APPLICATIONS**

**Please Note:** Optimal dilutions should be determined by each laboratory for each application. *General Protocols* are available in the *Technical Information* section on our website.

**CyTOF-ready** Ready to be labeled using established conjugation methods. No BSA or other carrier proteins that could interfere with conjugation.

Negative control for use in conjunction with R&D Systems antibodies. Use at the same concentration as the detection antibody.

**DATA**



**PREPARATION AND STORAGE**

<b>Reconstitution</b>	Reconstitute at 0.5 mg/mL in sterile PBS.
<b>Shipping</b>	The product is shipped at ambient temperature. Upon receipt, store it immediately at the temperature recommended below. *Small pack size (-SP) is shipped with polar packs. Upon receipt, store it immediately at -20 to -70 °C
<b>Stability &amp; Storage</b>	<b>Use a manual defrost freezer and avoid repeated freeze-thaw cycles.</b> <ul style="list-style-type: none"> <li>● 12 months from date of receipt, -20 to -70 °C as supplied.</li> <li>● 1 month, 2 to 8 °C under sterile conditions after reconstitution.</li> <li>● 6 months, -20 to -70 °C under sterile conditions after reconstitution.</li> </ul>