

DESCRIPTION

Specificity	Selected for use as rabbit IgG isotype control for flow cytometry applications.
Source	Monoclonal Rabbit IgG Clone # 60024B
Purification	Protein A or G purified from cell culture supernatant
Immunogen	KLH
Formulation	Lyophilized from a 0.2 µm filtered solution in PBS with Trehalose. See Certificate of Analysis for details. *Small pack size (-SP) is supplied as a 0.2 µm filtered solution in PBS.

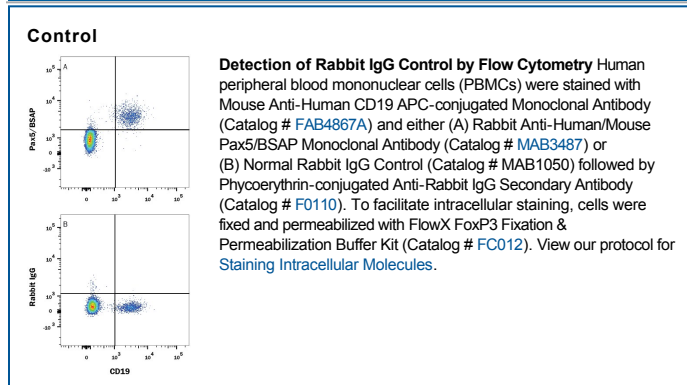
APPLICATIONS

Please Note: Optimal dilutions should be determined by each laboratory for each application. General Protocols are available in the Technical Information section on our website.

CyTOF-ready Ready to be labeled using established conjugation methods. No BSA or other carrier proteins that could interfere with conjugation.

Negative control for use in conjunction with R&D Systems antibodies. Use at the same concentration as the detection antibody.

DATA



PREPARATION AND STORAGE

Reconstitution	Reconstitute at 0.5 mg/mL in sterile PBS.
Shipping	The product is shipped at ambient temperature. Upon receipt, store it immediately at the temperature recommended below. *Small pack size (-SP) is shipped with polar packs. Upon receipt, store it immediately at -20 to -70 °C
Stability & Storage	Use a manual defrost freezer and avoid repeated freeze-thaw cycles. <ul style="list-style-type: none"> ● 12 months from date of receipt, -20 to -70 °C as supplied. ● 1 month, 2 to 8 °C under sterile conditions after reconstitution. ● 6 months, -20 to -70 °C under sterile conditions after reconstitution.