

#### DESCRIPTION

<b>Specificity</b>	Detects CRISPR-Cas13a in direct ELISAs.
<b>Source</b>	Monoclonal Mouse IgG <sub>1</sub> Clone # 1020221
<b>Purification</b>	Protein A or G purified from hybridoma culture supernatant
<b>Immunogen</b>	<i>E. coli</i> -derived recombinant <i>Leptotrichia wadei</i> Cas13a Lys2-Glu1152 Accession # WP_021746774
<b>Formulation</b>	Lyophilized from a 0.2 µm filtered solution in PBS with Trehalose. See Certificate of Analysis for details. *Small pack size (-SP) is supplied either lyophilized or as a 0.2 µm filtered solution in PBS.

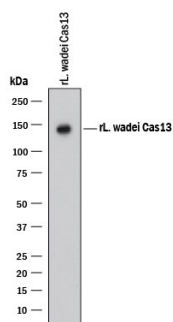
#### APPLICATIONS

**Please Note:** Optimal dilutions should be determined by each laboratory for each application. [General Protocols](#) are available in the Technical Information section on our website.

	<b>Recommended Concentration</b>	<b>Sample</b>
<b>Western Blot</b>	2 µg/mL	Recombinant <i>Leptotrichia wadei</i> Cas13a protein

#### DATA

##### Western Blot



**Detection of CRISPR-Cas13a by Western Blot.** Western blot shows recombinant *Leptotrichia wadei* Cas 13a protein. PVDF membrane was probed with 2 µg/mL of Mouse Anti-CRISPR-Cas13a Monoclonal Antibody (Catalog # MAB10462) followed by HRP-conjugated Anti-Mouse IgG Secondary Antibody (Catalog # [HAF018](#)). A specific band was detected for CRISPR-Cas13a at approximately 143 kDa (as indicated). This experiment was conducted under reducing conditions and using Western Blot Buffer Group 1.

#### PREPARATION AND STORAGE

<b>Reconstitution</b>	Reconstitute at 0.5 mg/mL in sterile PBS.
<b>Shipping</b>	The product is shipped at ambient temperature. Upon receipt, store it immediately at the temperature recommended below. *Small pack size (-SP) is shipped with polar packs. Upon receipt, store it immediately at -20 to -70 °C
<b>Stability &amp; Storage</b>	<b>Use a manual defrost freezer and avoid repeated freeze-thaw cycles.</b> <ul style="list-style-type: none"> <li>• 12 months from date of receipt, -20 to -70 °C as supplied.</li> <li>• 1 month, 2 to 8 °C under sterile conditions after reconstitution.</li> <li>• 6 months, -20 to -70 °C under sterile conditions after reconstitution.</li> </ul>