

# Human CD20 (Research Grade Tositumomab Biosimilar) Antibody

Recombinant Monoclonal Human IgG<sub>1</sub> Clone # Hu11A

Catalog Number: MAB10440

## DESCRIPTION

<b>Species Reactivity</b>	Human
<b>Specificity</b>	Detects Human CD20 based on Tositumomab therapeutic antibody. This non-therapeutic antibody uses the same variable region sequence as the therapeutic antibody Tositumomab. This product is for research use only.
<b>Source</b>	Recombinant Monoclonal Human IgG <sub>1</sub> Clone # Hu11A
<b>Purification</b>	Protein A or G purified from cell culture supernatant
<b>Immunogen</b>	Human CD20
<b>Endotoxin Level</b>	<0.10 EU per 1 µg of the antibody by the LAL method.
<b>Formulation</b>	Lyophilized from a 0.2 µm filtered solution in PBS with Trehalose. See Certificate of Analysis for details. *Small pack size (-SP) is supplied either lyophilized or as a 0.2 µm filtered solution in PBS.

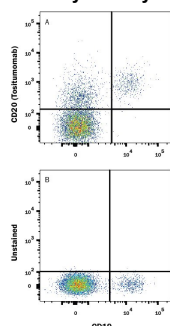
## APPLICATIONS

**Please Note:** Optimal dilutions should be determined by each laboratory for each application. [General Protocols](#) are available in the Technical Information section on our website.

	<b>Recommended Concentration</b>	<b>Sample</b>
<b>Flow Cytometry</b>	0.25 µg/10 <sup>6</sup> cells	See Below
<b>CytoTOF-ready</b>	Ready to be labeled using established conjugation methods. No BSA or other carrier proteins that could interfere with conjugation.	

## DATA

### Flow Cytometry



**Detection of CD20 (Tositumomab) in Human PBMCs by Flow Cytometry.** Human PBMCs were stained with (A) Human Anti-Human CD20 (Research Grade Tositumomab Biosimilar) Monoclonal Antibody (Catalog # MAB10440) or (B) unstained, followed by APC-conjugated Anti-Human IgG Secondary Antibody (Catalog # F0135) and Mouse anti-Human CD19 PE-conjugated Monoclonal Antibody (Catalog # FAB4867P). View our protocol for [Staining Membrane-associated Proteins](#).

## PREPARATION AND STORAGE

<b>Reconstitution</b>	Reconstitute at 0.5 mg/mL in sterile PBS.
<b>Shipping</b>	The product is shipped at ambient temperature. Upon receipt, store it immediately at the temperature recommended below. *Small pack size (-SP) is shipped with polar packs. Upon receipt, store it immediately at -20 to -70 °C
<b>Stability &amp; Storage</b>	<b>Use a manual defrost freezer and avoid repeated freeze-thaw cycles.</b> <ul style="list-style-type: none"> <li>12 months from date of receipt, -20 to -70 °C as supplied.</li> <li>1 month, 2 to 8 °C under sterile conditions after reconstitution.</li> <li>6 months, -20 to -70 °C under sterile conditions after reconstitution.</li> </ul>

## BACKGROUND

Tositumomab is a biosimilar directed against CD20.