

DESCRIPTION

Species Reactivity	Mouse
Specificity	Detects Ly-6G/Ly-6C (Gr-1). Weak cross-reactivity with Ly-6C is observed.
Source	Monoclonal Rat IgG _{2B} Clone # RB6-8C5
Purification	Protein A or G purified from hybridoma culture supernatant
Immunogen	The immunogen for this antibody is Ly-6G (Gr-1, Gr1).
Formulation	Lyophilized from a 0.2 µm filtered solution in PBS with Trehalose. See Certificate of Analysis for details. *Small pack size (-SP) is supplied as a 0.2 µm filtered solution in PBS.

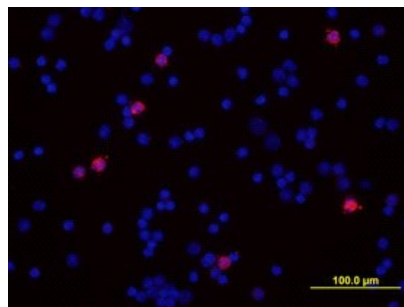
APPLICATIONS

Please Note: Optimal dilutions should be determined by each laboratory for each application. General Protocols are available in the Technical Information section on our website.

	Recommended Concentration	Sample
Flow Cytometry	0.25 µg/10 ⁶ cells	Mouse splenocytes or peripheral blood cells
Immunocytochemistry	8-25 µg/mL	See Below
CytoF-ready	Ready to be labeled using established conjugation methods. No BSA or other carrier proteins that could interfere with conjugation.	
Immunohistochemistry	Nitta, H. <i>et al.</i> (1997) Cell Vision 4:73.	
Immunoprecipitation	Conlan, J.W. and R.J. North (1994) J. Exp. Med. 179:259.	

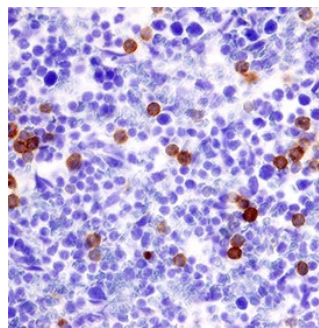
DATA

Immunocytochemistry



Ly-6G/Ly-6C (Gr-1) in Mouse Splenocytes.
Ly-6G/Ly-6C (Gr-1) was detected in immersion fixed mouse splenocytes using Mouse Ly-6G/Ly-6C (Gr-1) Monoclonal Antibody (Catalog # MAB1037) at 10 µg/mL for 3 hours at room temperature. Cells were stained using the NorthernLights™ 557-conjugated Anti-Rat IgG Secondary Antibody (red; Catalog # NL013) and counterstained with DAPI (blue). View our protocol for [Fluorescent ICC Staining of Non-adherent Cells](#).

Immunohistochemistry



Ly-6G/Ly-6C (Gr-1) in Mouse Spleen.
Ly-6G/Ly-6C (Gr-1) was detected in perfusion fixed frozen sections of mouse spleen using Rat Anti-Mouse Ly-6G/Ly-6C (Gr-1) Monoclonal Antibody (Catalog # MAB1037) at 3 µg/mL overnight at 4 °C. Tissue was stained using the Anti-Rat HRP-DAB Cell & Tissue Staining Kit (brown; Catalog # CTS017) and counterstained with hematoxylin (blue). Specific staining was localized to cytoplasm in splenocytes. View our protocol for [Chromogenic IHC Staining of Frozen Tissue Sections](#).

PREPARATION AND STORAGE

Reconstitution	Reconstitute at 0.5 mg/mL in sterile PBS.
Shipping	The product is shipped at ambient temperature. Upon receipt, store it immediately at the temperature recommended below. *Small pack size (-SP) is shipped with polar packs. Upon receipt, store it immediately at -20 to -70 °C
Stability & Storage	Use a manual defrost freezer and avoid repeated freeze-thaw cycles. <ul style="list-style-type: none"> ● 12 months from date of receipt, -20 to -70 °C as supplied. ● 1 month, 2 to 8 °C under sterile conditions after reconstitution. ● 6 months, -20 to -70 °C under sterile conditions after reconstitution.

BACKGROUND

The myeloid differentiation antigen Gr-1 is a member of the Ly-6 family, Ly-6G (1). The RB6-8C5 antibody also reacts weakly with Ly-6C-transfected EL4 cells (2). In the periphery, this antibody specifically recognized granulocytes (3, 4).

References:

1. Spangrude, G.J. *et al.* (1988) Science **241**:58.
2. Fleming, T.J. *et al.* (1993) J. Immunol. **151**:2399.
3. Lewinsohn, D.M. *et al.* (1987) J. Immunol. **147**:22.
4. Lagasse, E. and I.L. Weissman (1996) J. Immunol. Methods **197**:139.