

#### DESCRIPTION

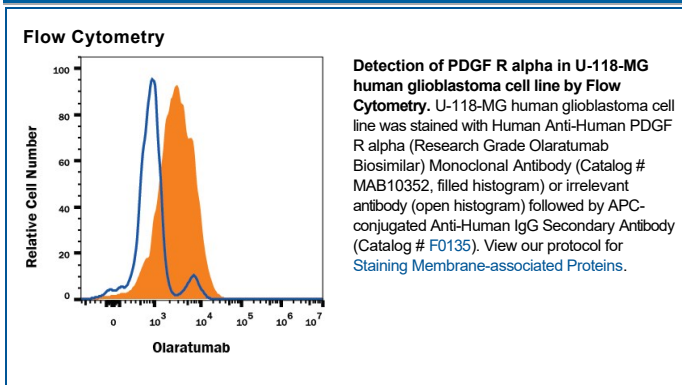
<b>Species Reactivity</b>	Human
<b>Specificity</b>	Detects Human PDGF R $\alpha$ in direct ELISAs. This non-therapeutic antibody uses the same variable region sequence as the therapeutic antibody Olaratumab. This product is for research use only.
<b>Source</b>	Recombinant Monoclonal Human IgG <sub>1</sub> Clone # Hu136
<b>Purification</b>	Protein A or G purified from cell culture supernatant
<b>Immunogen</b>	Human PDGF R $\alpha$
<b>Endotoxin Level</b>	<0.10 EU per 1 $\mu$ g of the antibody by the LAL method.
<b>Formulation</b>	Lyophilized from a 0.2 $\mu$ m filtered solution in PBS with Trehalose. See Certificate of Analysis for details. *Small pack size (-SP) is supplied either lyophilized or as a 0.2 $\mu$ m filtered solution in PBS.

#### APPLICATIONS

**Please Note:** Optimal dilutions should be determined by each laboratory for each application. *General Protocols* are available in the *Technical Information* section on our website.

	<b>Recommended Concentration</b>	<b>Sample</b>
<b>Flow Cytometry</b>	0.25 $\mu$ g/10 <sup>6</sup> cells	See Below
<b>CyTOF-ready</b>	Ready to be labeled using established conjugation methods. No BSA or other carrier proteins that could interfere with conjugation.	

#### DATA



#### PREPARATION AND STORAGE

<b>Reconstitution</b>	Reconstitute at 0.5 mg/mL in sterile PBS.
<b>Shipping</b>	The product is shipped at ambient temperature. Upon receipt, store it immediately at the temperature recommended below. *Small pack size (-SP) is shipped with polar packs. Upon receipt, store it immediately at -20 to -70 °C
<b>Stability &amp; Storage</b>	<b>Use a manual defrost freezer and avoid repeated freeze-thaw cycles.</b> <ul style="list-style-type: none"> <li>• 12 months from date of receipt, -20 to -70 °C as supplied.</li> <li>• 1 month, 2 to 8 °C under sterile conditions after reconstitution.</li> <li>• 6 months, -20 to -70 °C under sterile conditions after reconstitution.</li> </ul>

#### BACKGROUND

Olaratumab is a biosimilar directed against human PDGF R $\alpha$ .