

## DESCRIPTION

<b>Species Reactivity</b>	Human
<b>Specificity</b>	Detects human 5-HT2B in direct ELISAs.
<b>Source</b>	Monoclonal Mouse IgG <sub>2A</sub> Clone # 1014838
<b>Purification</b>	Protein A or G purified from ascites
<b>Immunogen</b>	Synthetic peptide containing human 5-HT2B Accession # P41595
<b>Formulation</b>	Lyophilized from a 0.2 µm filtered solution in PBS with Trehalose. See Certificate of Analysis for details. *Small pack size (-SP) is supplied either lyophilized or as a 0.2 µm filtered solution in PBS.

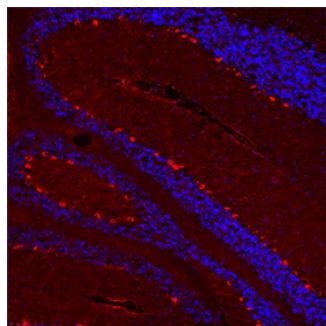
## APPLICATIONS

**Please Note:** Optimal dilutions should be determined by each laboratory for each application. [General Protocols](#) are available in the Technical Information section on our website.

	<b>Recommended Concentration</b>	<b>Sample</b>
<b>Immunohistochemistry</b>	8-25 µg/mL	See Below

## DATA

### Immunohistochemistry



**5-HT2B in Mouse Cerebellum.** 5-HT2B was detected in immersion fixed paraffin-embedded sections of mouse cerebellum using Mouse Anti-Human 5-HT2B Monoclonal Antibody (Catalog # MAB10322) at 8 µg/mL overnight at 4 °C. Before incubation with the primary antibody, tissue was subjected to heat-induced epitope retrieval using Antigen Retrieval Reagent-Basic (Catalog # CTS013). Tissue was stained using the NorthernLights™ 557-conjugated Anti-Mouse IgG Secondary Antibody (red; Catalog # NL007) and counterstained with DAPI (blue). Specific staining was localized to Purkinje neurons.

## PREPARATION AND STORAGE

<b>Reconstitution</b>	Reconstitute at 0.5 mg/mL in sterile PBS.
<b>Shipping</b>	The product is shipped at ambient temperature. Upon receipt, store it immediately at the temperature recommended below. *Small pack size (-SP) is shipped with polar packs. Upon receipt, store it immediately at -20 to -70 °C
<b>Stability &amp; Storage</b>	<b>Use a manual defrost freezer and avoid repeated freeze-thaw cycles.</b> <ul style="list-style-type: none"> <li>12 months from date of receipt, -20 to -70 °C as supplied.</li> <li>1 month, 2 to 8 °C under sterile conditions after reconstitution.</li> <li>6 months, -20 to -70 °C under sterile conditions after reconstitution.</li> </ul>

## BACKGROUND

5-HT2B is a G-protein coupled receptor for serotonin. The 5HT2 receptors mediate many of the central and peripheral physiologic functions of serotonin. 5HT2B plays a role in the regulation of dopamine and serotonin release, serotonin uptake and in the regulation of extracellular dopamine and serotonin levels. It also plays a role in pulmonary vasoconstriction and regulating cardiac structure and functions. 5HT2B receptors were shown to be expressed in human failing heart and have been strongly implicated in drug induced valvular heart disease.