

DESCRIPTION

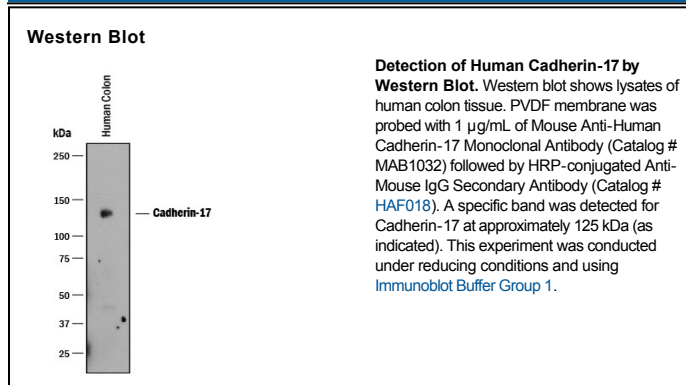
Species Reactivity	Human
Specificity	Detects human Cadherin-17 in direct ELISAs and Western blots. In direct ELISAs and Western blots, this antibody does not cross-react with recombinant human (rh) Cadherin-8, rhE-Cadherin, rhP-Cadherin, or rhVE-Cadherin.
Source	Monoclonal Mouse IgG ₁ Clone # 141713
Purification	Protein A or G purified from hybridoma culture supernatant
Immunogen	Mouse myeloma cell line NS0-derived recombinant human Cadherin-17 Gln23-Met787 Accession # CAA58231
Formulation	Lyophilized from a 0.2 µm filtered solution in PBS with Trehalose. See Certificate of Analysis for details. *Small pack size (-SP) is supplied as a 0.2 µm filtered solution in PBS.

APPLICATIONS

Please Note: Optimal dilutions should be determined by each laboratory for each application. *General Protocols* are available in the *Technical Information* section on our website.

	Recommended Concentration	Sample
Western Blot	1 µg/mL	See Below
Immunohistochemistry	8-25 µg/mL	Immersion fixed paraffin-embedded sections of human colon

DATA



PREPARATION AND STORAGE

Reconstitution	Reconstitute at 0.5 mg/mL in sterile PBS.
Shipping	The product is shipped at ambient temperature. Upon receipt, store it immediately at the temperature recommended below. *Small pack size (-SP) is shipped with polar packs. Upon receipt, store it immediately at -20 to -70 °C
Stability & Storage	Use a manual defrost freezer and avoid repeated freeze-thaw cycles. <ul style="list-style-type: none"> ● 12 months from date of receipt, -20 to -70 °C as supplied. ● 1 month, 2 to 8 °C under sterile conditions after reconstitution. ● 6 months, -20 to -70 °C under sterile conditions after reconstitution.

BACKGROUND

Cadherin-17, also known as liver-intestine (LI) Cadherin, belongs to the cadherin family of calcium-dependent cell adhesion molecules. It associates homotypically and is selectively expressed on gastric and intestinal mucosa.