

DESCRIPTION

Species Reactivity	Human
Specificity	Detects human RelaxinR2 in direct ELISAs.
Source	Monoclonal Mouse IgG _{2B} Clone # 1013901
Purification	Protein A or G purified from hybridoma culture supernatant
Immunogen	Chinese hamster ovary cell line CHO-derived recombinant human Relaxin R2 Met1-Asn416 Accession # Q8WXD0
Formulation	Lyophilized from a 0.2 µm filtered solution in PBS with Trehalose. See Certificate of Analysis for details. *Small pack size (-SP) is supplied either lyophilized or as a 0.2 µm filtered solution in PBS.

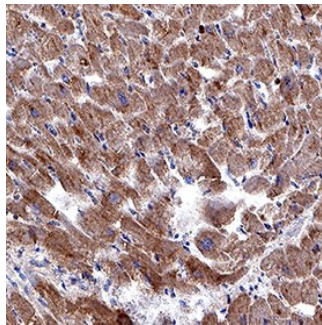
APPLICATIONS

Please Note: Optimal dilutions should be determined by each laboratory for each application. [General Protocols](#) are available in the Technical Information section on our website.

	Recommended Concentration	Sample
Immunohistochemistry	5-25 µg/mL	See Below

DATA

Immunohistochemistry



Relaxin R2 in Human Heart. Relaxin R2 was detected in immersion fixed paraffin-embedded sections of human heart using Mouse Anti-Human Relaxin R2 Monoclonal Antibody (Catalog # MAB10250) at 5 µg/mL for 1 hour at room temperature followed by incubation with the Anti-Mouse IgG VisUCyte™ HRP Polymer Antibody (Catalog # VC001). Before incubation with the primary antibody, tissue was subjected to heat-induced epitope retrieval using Antigen Retrieval Reagent-Basic (Catalog # CTS013). Tissue was stained using DAB (brown) and counterstained with hematoxylin (blue). Specific staining was localized to cytoplasm in cardiomyocytes. View our protocol for IHC Staining with VisUCyte HRP Polymer Detection Reagents.

PREPARATION AND STORAGE

Reconstitution	Reconstitute at 0.5 mg/mL in sterile PBS.
Shipping	The product is shipped at ambient temperature. Upon receipt, store it immediately at the temperature recommended below. *Small pack size (-SP) is shipped with polar packs. Upon receipt, store it immediately at -20 to -70 °C
Stability & Storage	Use a manual defrost freezer and avoid repeated freeze-thaw cycles. <ul style="list-style-type: none"> • 12 months from date of receipt, -20 to -70 °C as supplied. • 1 month, 2 to 8 °C under sterile conditions after reconstitution. • 6 months, -20 to -70 °C under sterile conditions after reconstitution.

BACKGROUND

Relaxin R2 (also known as LGR8) is the G-protein coupled receptor (GPCR) for Relaxin, and may also be a receptor for INSL3. LGR8 can mediate the action of Relaxin through cAMP-dependent pathway distinct from structurally related insulin and insulin-like growth factor family ligand. Distribution of this receptor implicates its role in reproductive, brain, renal, cardiovascular and other functions.