

DESCRIPTION

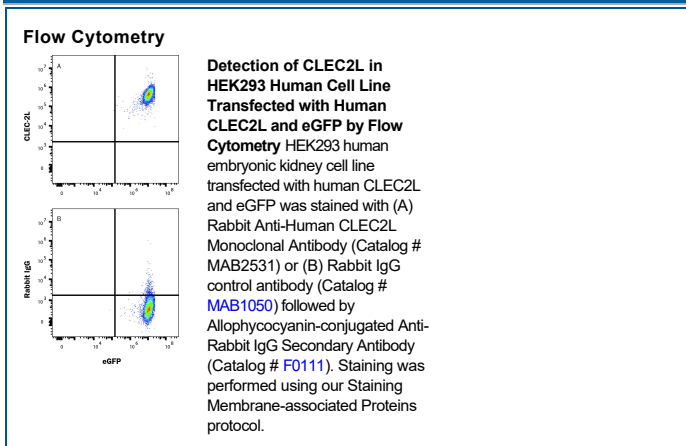
Species Reactivity	Human
Specificity	Detects human CLEC2L in direct ELISA.
Source	Recombinant Monoclonal Rabbit IgG Clone # 2326G
Purification	Protein A or G purified from hybridoma culture supernatant
Immunogen	Human embryonic kidney cell, HEK293-derived human CLEC2L protein Ser90-Thr214 Accession # P0C7M8-1
Formulation	Lyophilized from a 0.2 µm filtered solution in PBS with Trehalose. See Certificate of Analysis for details. *Small pack size (-SP) is supplied either lyophilized or as a 0.2 µm filtered solution in PBS.

APPLICATIONS

Please Note: Optimal dilutions should be determined by each laboratory for each application. [General Protocols](#) are available in the Technical Information section on our website.

	Recommended Concentration	Sample
Flow Cytometry	0.5 µg/10 ⁶ cells	HEK293 human embryonic kidney cell line transfected with human CLEC2L and eGFP

DATA



PREPARATION AND STORAGE

Reconstitution	Reconstitute at 0.5 mg/mL in sterile PBS.
Shipping	The product is shipped at ambient temperature. Upon receipt, store it immediately at the temperature recommended below. *Small pack size (-SP) is shipped with polar packs. Upon receipt, store it immediately at -20 to -70 °C
Stability & Storage	Use a manual defrost freezer and avoid repeated freeze-thaw cycles. <ul style="list-style-type: none"> 12 months from date of receipt, -20 to -70 °C as supplied. 1 month, 2 to 8 °C under sterile conditions after reconstitution. 6 months, -20 to -70 °C under sterile conditions after reconstitution.

BACKGROUND

C-type lectin domain family 2, member L (CLEC2L), is a type II transmembrane protein of the CLEC2 family of proteins that includes CD69, LLT1, AICL and KACL (1, 2). CLEC2 family members have broad tissue expression, with LLT1, AICL and KACL expressed on B cells, monocytes, and keratinocytes, respectively (3-5). In contrast, CLEC2L, a homodimeric cell surface receptor, is predominantly expressed in the brain and is referred to as the brain-associated C-type lectin (BACL) (6). Mature human CLEC2L includes a 68 amino acid (aa) cytoplasmic domain, a 21 aa transmembrane segment, and a 125 aa extracellular domain (ECD). Within the ECD, human CLEC2L shares 94% aa sequence identity with mouse and rat CLEC2L. Our assay shows that CLEC2L binds to Galectin-3.

References:

1. Yokoyama, W.M. and B.F. Plougastel (2003) Nat. Rev. Immunol. **3**:304.
2. Vogler, I. and A. Steinle (2011) J. Innate Immune. **3**:227.
3. Welte, S. *et al.* (2006) Nat. Immunol. **7**:1334.
4. Spreu, J. *et al.* (2010) Proc. Natl. Acad. Sci. USA **107**:5100.
5. Rosen, D.B. *et al.* (2008) J. Immunol. **180**:6508.
6. Lysenko, O. *et al.* (2013) PloS One. **8**:e65345.