

DESCRIPTION

Species Reactivity	Human
Specificity	Detects human MT2A in direct ELISAs.
Source	Monoclonal Mouse IgG _{2A} Clone # 1006811
Purification	Protein A or G purified from hybridoma culture supernatant
Immunogen	Synthetic peptide containing human MT2A Accession # P02795
Formulation	Lyophilized from a 0.2 µm filtered solution in PBS with Trehalose. See Certificate of Analysis for details. *Small pack size (-SP) is supplied either lyophilized or as a 0.2 µm filtered solution in PBS.

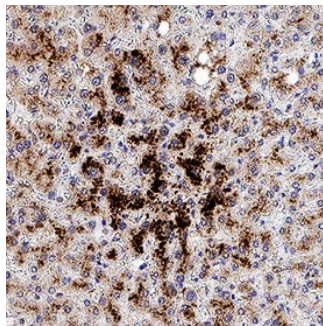
APPLICATIONS

Please Note: Optimal dilutions should be determined by each laboratory for each application. *General Protocols* are available in the *Technical Information* section on our website.

	Recommended Concentration	Sample
Immunohistochemistry	5-25 µg/mL	See Below

DATA

Immunohistochemistry



MT2A in Human Liver. MT2A was detected in immersion fixed paraffin-embedded sections of human liver using Mouse Anti-Human MT2A Monoclonal Antibody (Catalog # MAB10176) at 5 µg/mL for 1 hour at room temperature followed by incubation with the Anti-Mouse IgG VisUCyte™ HRP Polymer Antibody (Catalog # VC001). Before incubation with the primary antibody, tissue was subjected to heat-induced epitope retrieval using Antigen Retrieval Reagent-Basic (Catalog # CTS013). Tissue was stained using DAB (brown) and counterstained with hematoxylin (blue). Specific staining was localized to cytoplasm in hepatocytes. View our protocol for [IHC Staining with VisUCyte HRP Polymer Detection Reagents](#).

PREPARATION AND STORAGE

Reconstitution	Reconstitute at 0.5 mg/mL in sterile PBS.
Shipping	The product is shipped at ambient temperature. Upon receipt, store it immediately at the temperature recommended below. *Small pack size (-SP) is shipped with polar packs. Upon receipt, store it immediately at -20 to -70 °C
Stability & Storage	Use a manual defrost freezer and avoid repeated freeze-thaw cycles. <ul style="list-style-type: none"> • 12 months from date of receipt, -20 to -70 °C as supplied. • 1 month, 2 to 8 °C under sterile conditions after reconstitution. • 6 months, -20 to -70 °C under sterile conditions after reconstitution.

BACKGROUND

Metallothionein-2 (MT2A) is a protein that is transcriptionally regulated by heavy metals and glucocorticoids. This Metallothionein (MT) binds zinc. MTs sequester and/or dispense zinc during stress and inflammation to protect cells against reactive oxygen species.