

**DESCRIPTION**

<b>Species Reactivity</b>	Mouse
<b>Specificity</b>	Detects mouse CD68 in direct ELISAs.
<b>Source</b>	Recombinant Monoclonal Rabbit IgG Clone # 2449D
<b>Purification</b>	Protein A or G purified from cell culture supernatant
<b>Immunogen</b>	Chinese Hamster Ovary cell line, CHO-derived mouse CD68 Asp21-Pro282 Accession # P31996
<b>Formulation</b>	Lyophilized from a 0.2 µm filtered solution in PBS with Trehalose. See Certificate of Analysis for details. *Small pack size (-SP) is supplied either lyophilized or as a 0.2 µm filtered solution in PBS.

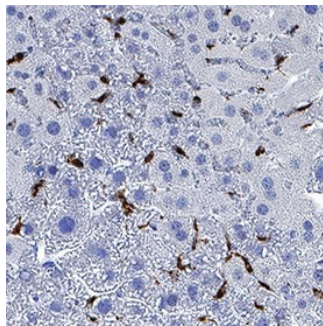
**APPLICATIONS**

**Please Note:** Optimal dilutions should be determined by each laboratory for each application. General Protocols are available in the Technical Information section on our website.

	<b>Recommended Concentration</b>	<b>Sample</b>
<b>Immunohistochemistry</b>	3-25 µg/mL	See Below
<b>Intracellular Staining by Flow Cytometry</b>	0.25 µg/10 <sup>6</sup> cells	See Below
<b>CytoF-ready</b>	Ready to be labeled using established conjugation methods. No BSA or other carrier proteins that could interfere with conjugation.	

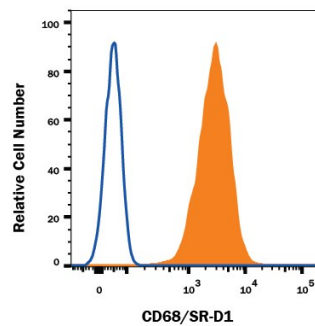
**DATA**

**Immunohistochemistry**



**CD68/SR-D1 in Mouse Liver.** CD68/SR-D1 was detected in immersion fixed paraffin-embedded sections of mouse liver using Rabbit Anti-Mouse CD68/SR-D1 Monoclonal Antibody (Catalog # MAB101141) at 3 µg/mL for 1 hour at room temperature followed by incubation with the Anti-Rabbit IgG VisUCyte™ HRP Polymer Antibody (Catalog # VC003). Before incubation with the primary antibody, tissue was subjected to heat-induced epitope retrieval using Antigen Retrieval Reagent-Basic (Catalog # CTS013). Tissue was stained using DAB (brown) and counterstained with hematoxylin (blue). Specific staining was localized to Kupffer cells. View our protocol for [IHC Staining with VisUCyte HRP Polymer Detection Reagents](#).

**Intracellular Staining by Flow Cytometry**



**Detection of CD68 in Raw264.7 Mouse Cell line by Flow Cytometry.** Raw264.7 mouse cell line was stained with Rabbit Anti-Mouse CD68 Monoclonal Antibody (Catalog # MAB101141, filled histogram) or Normal Rabbit IgG Control (Catalog # MAB1050, open histogram) followed by Phycoerythrin-conjugated Anti-Rabbit IgG Secondary Antibody (Catalog # F0110). To facilitate intracellular staining, cells were fixed with Flow Cytometry Fixation Buffer (1x) (Catalog # FC004) and permeabilized with ice-cold methanol.

**PREPARATION AND STORAGE**

<b>Reconstitution</b>	Reconstitute at 0.5 mg/mL in sterile PBS.
<b>Shipping</b>	The product is shipped at ambient temperature. Upon receipt, store it immediately at the temperature recommended below. *Small pack size (-SP) is shipped with polar packs. Upon receipt, store it immediately at -20 to -70 °C
<b>Stability &amp; Storage</b>	<b>Use a manual defrost freezer and avoid repeated freeze-thaw cycles.</b> <ul style="list-style-type: none"> <li>• 12 months from date of receipt, -20 to -70 °C as supplied.</li> <li>• 1 month, 2 to 8 °C under sterile conditions after reconstitution.</li> <li>• 6 months, -20 to -70 °C under sterile conditions after reconstitution.</li> </ul>

**BACKGROUND**

Macrosialin (CD68) is a macrophage-restricted glycosylated transmembrane protein. It belongs to the lamp family and carries out specialized functions in dedicated phagocytic cells. Macrosialin binds to tissue- and organ-specific lectins to allow homing of macrophages to specific targets. Its presence in macrophages is useful in diagnosing conditions related to proliferation or abnormality of these cells.