

**DESCRIPTION**

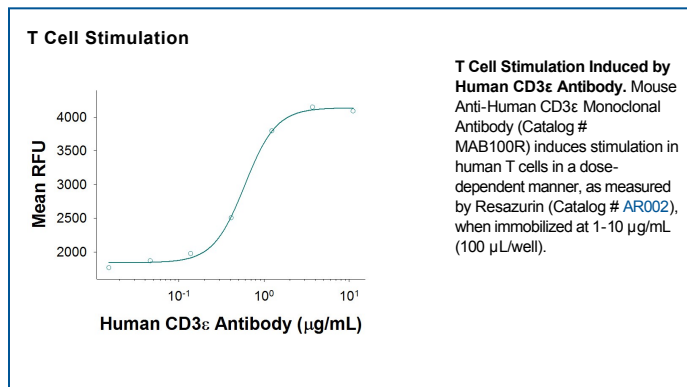
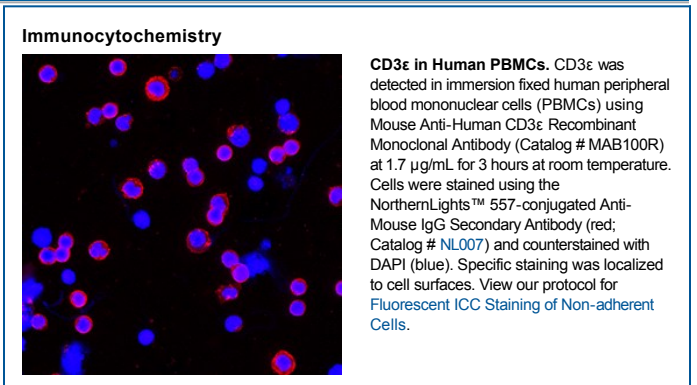
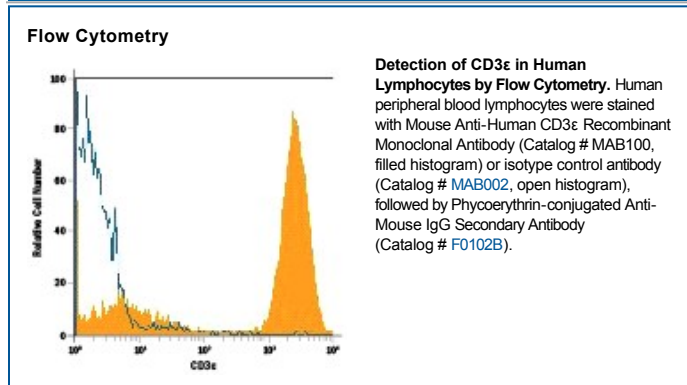
<b>Species Reactivity</b>	Human
<b>Specificity</b>	Recognizes the $\epsilon$ -chain of the CD3/T cell antigen receptor complex (McMichael, A.J. <i>et al.</i> (1987) Leucocyte Typing III: White Cell Differentiation Antigens, Oxford University Press, New York; Knapp, W. <i>et al.</i> (1989) Leucocyte Typing IV: White Cell Differentiation Antigens, Oxford University Press, New York; Schlossman, S. <i>et al.</i> (1995) Leucocyte Typing V: White Cell Differentiation Antigens, Oxford University Press, New York).
<b>Source</b>	Recombinant Monoclonal Mouse IgG <sub>1</sub> Clone # UCHT1R
<b>Purification</b>	Protein A or G purified from cell culture supernatant
<b>Immunogen</b>	Human thymocytes
<b>Endotoxin Level</b>	<0.10 EU per 1 $\mu$ g of the antibody by the LAL method.
<b>Formulation</b>	Supplied as a solution in PBS. See Certificate of Analysis for details. *Small pack size (-SP) is supplied as a 0.2 $\mu$ m filtered solution in PBS.

**APPLICATIONS**

**Please Note:** Optimal dilutions should be determined by each laboratory for each application. *General Protocols* are available in the *Technical Information* section on our website.

	<b>Recommended Concentration</b>	<b>Sample</b>
<b>Flow Cytometry</b>	0.25 $\mu$ g/10 <sup>6</sup> cells	See Below
<b>Immunocytochemistry</b>	1-25 $\mu$ g/mL	See Below
<b>T Cell Stimulation</b>	This antibody can be used to activate T cells when immobilized at 1-10 $\mu$ g/mL (100 $\mu$ L/well).	

**DATA**



**PREPARATION AND STORAGE**

<b>Shipping</b>	The product is shipped with polar packs. Upon receipt, store it immediately at the temperature recommended below. *Small pack size (-SP) is shipped with polar packs. Upon receipt, store it immediately at -20 to -70 °C
<b>Stability &amp; Storage</b>	<b>Use a manual defrost freezer and avoid repeated freeze-thaw cycles.</b> <ul style="list-style-type: none"> <li>• 12 months from date of receipt, -20 to -70 °C, as supplied.</li> <li>• 1 month, 2 to 8 °C under sterile conditions after opening.</li> <li>• 6 months, -20 to -70 °C under sterile conditions after opening.</li> </ul>

**BACKGROUND**

CD3 $\epsilon$  is one of at least four invariant proteins that associate with the variable antigen recognition chains of the T cell receptor and function in signal transduction.

**References:**

1. Beverly, P.C.L. and R.E. Callard (1981) Eur. J. Immunol. **11**:329.