

## DESCRIPTION

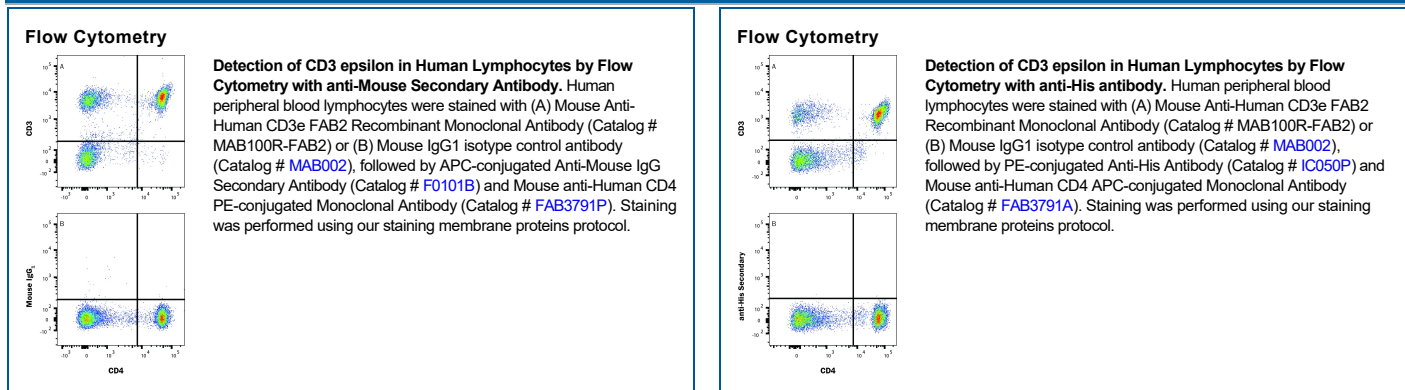
<b>Species Reactivity</b>	Human
<b>Specificity</b>	Detects human CD3 epsilon
<b>Source</b>	Recombinant Monoclonal Mouse IgG <sub>1</sub> Clone # UCHT1R-FAB2-TEV/His
<b>Purification</b>	Protein A or G purified from cell culture supernatant
<b>Immunogen</b>	Human thymocytes
<b>Formulation</b>	Lyophilized from a 0.2 µm filtered solution in PBS with Trehalose. See Certificate of Analysis for details. *Small pack size (-SP) is supplied either lyophilized or as a 0.2 µm filtered solution in PBS.

## APPLICATIONS

Please Note: Optimal dilutions should be determined by each laboratory for each application. General Protocols are available in the Technical Information section on our website.

	Recommended Concentration	Sample
Flow Cytometry	0.25 µg/10 <sup>6</sup> cells	PBMC lymphocytes

## DATA



## PREPARATION AND STORAGE

<b>Reconstitution</b>	Reconstitute at 0.5 mg/mL in sterile PBS.
<b>Shipping</b>	The product is shipped at ambient temperature. Upon receipt, store it immediately at the temperature recommended below. *Small pack size (-SP) is shipped with polar packs. Upon receipt, store it immediately at -20 to -70 °C
<b>Stability &amp; Storage</b>	<b>Use a manual defrost freezer and avoid repeated freeze-thaw cycles.</b> <ul style="list-style-type: none"> <li>• 12 months from date of receipt, -20 to -70 °C as supplied.</li> <li>• 1 month, 2 to 8 °C under sterile conditions after reconstitution.</li> <li>• 6 months, -20 to -70 °C under sterile conditions after reconstitution.</li> </ul>

## BACKGROUND

CD3ε is one of at least four invariant proteins that associate with the variable antigen recognition chains of the T cell receptor and function in signal transduction.

### References:

1. Beverly, P.C.L. and R.E. Callard (1981) Eur. J. Immunol. 11:329.