

## DESCRIPTION

<b>Specificity</b>	Detects NucA nuclease in direct ELISAs.
<b>Source</b>	Recombinant Monoclonal Rabbit IgG Clone # 2404C
<b>Purification</b>	Protein A or G purified from cell culture supernatant
<b>Immunogen</b>	<i>E. coli</i> -derived <i>S. marcescens</i> recombinant NucA nuclease Met1-Asn266 Accession # P13717
<b>Formulation</b>	Lyophilized from a 0.2 µm filtered solution in PBS with Trehalose.

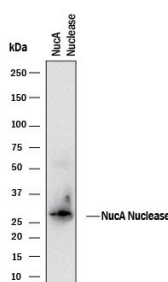
## APPLICATIONS

**Please Note:** Optimal dilutions should be determined by each laboratory for each application. [General Protocols](#) are available in the Technical Information section on our website.

	<b>Recommended Concentration</b>	<b>Sample</b>
<b>Western Blot</b>	2 µg/mL	See Below
<b>Simple Western</b>	10 µg/mL	See Below

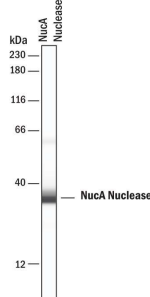
## DATA

### Western Blot



**Detection of NucA nuclease by Western Blot.** Western blot shows recombinant NucA nuclease protein. PVDF membrane was probed with 2 µg/mL of Rabbit Anti-NucA nuclease Monoclonal Antibody (Catalog # MAB100631) followed by HRP-conjugated Anti-Rabbit IgG Secondary Antibody (Catalog # HAF008). A specific band was detected for NucA nuclease at approximately 26 kDa (as indicated). This experiment was conducted under reducing conditions and using Immunoblot Buffer Group 1.

### Simple Western



**Detection of NucA nuclease by Simple Western™.** Simple Western lane view shows recombinant NucA nuclease protein, loaded at 0.2 mg/mL. A specific band was detected for NucA nuclease at approximately 35 kDa (as indicated) using 10 µg/mL of Rabbit Anti-NucA nuclease Monoclonal Antibody (Catalog # MAB100631). This experiment was conducted under reducing conditions and using the 12-230 kDa separation system.



## PREPARATION AND STORAGE

<b>Reconstitution</b>	Reconstitute at 0.5 mg/mL in sterile PBS.
<b>Shipping</b>	The product is shipped at ambient temperature. Upon receipt, store it immediately at the temperature recommended below.
<b>Stability &amp; Storage</b>	<b>Use a manual defrost freezer and avoid repeated freeze-thaw cycles.</b> <ul style="list-style-type: none"> <li>12 months from date of receipt, -20 to -70 °C as supplied.</li> <li>1 month, 2 to 8 °C under sterile conditions after reconstitution.</li> <li>6 months, -20 to -70 °C under sterile conditions after reconstitution.</li> </ul>