

DESCRIPTION

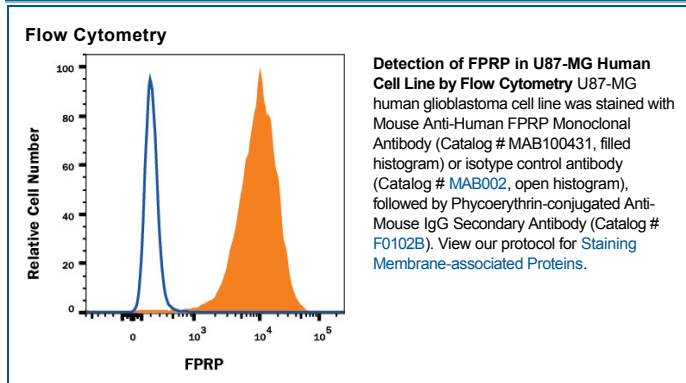
Species Reactivity	Human
Specificity	Detects human FPRP in direct ELISAs.
Source	Monoclonal Mouse IgG ₁ Clone # 998107
Purification	Protein A or G purified from hybridoma culture supernatant
Immunogen	Human embryonic kidney cell, HEK293-derived human FPRP Pro27-Pro832 Accession # Q9P2B2
Formulation	Lyophilized from a 0.2 µm filtered solution in PBS with Trehalose. See Certificate of Analysis for details. *Small pack size (-SP) is supplied either lyophilized or as a 0.2 µm filtered solution in PBS.

APPLICATIONS

Please Note: Optimal dilutions should be determined by each laboratory for each application. [General Protocols](#) are available in the [Technical Information](#) section on our website.

	Recommended Concentration	Sample
Flow Cytometry	0.25 µg/10 ⁶ cells	See Below
CytoTOF-ready	Ready to be labeled using established conjugation methods. No BSA or other carrier proteins that could interfere with conjugation.	

DATA



PREPARATION AND STORAGE

Reconstitution	Reconstitute at 0.5 mg/mL in sterile PBS.
Shipping	The product is shipped at ambient temperature. Upon receipt, store it immediately at the temperature recommended below. *Small pack size (-SP) is shipped with polar packs. Upon receipt, store it immediately at -20 to -70 °C
Stability & Storage	Use a manual defrost freezer and avoid repeated freeze-thaw cycles. <ul style="list-style-type: none"> • 12 months from date of receipt, -20 to -70 °C as supplied. • 1 month, 2 to 8 °C under sterile conditions after reconstitution. • 6 months, -20 to -70 °C under sterile conditions after reconstitution.

BACKGROUND

FPRP (F₂α Prostaglandin receptor Regulatory Protein; also CD315, EWI-F and CD9 partner-1/P-1) is a 130 kDa type I transmembrane (TM) glycoprotein member of the EWI subfamily, Ig superfamily of molecules. It associates with the 7-TM prostaglandin F₂α receptor, inhibiting its activity. It also forms complexes with 4-TM CD9 and CD81, linking these molecules to the intracellular actin cytoskeleton.