

DESCRIPTION

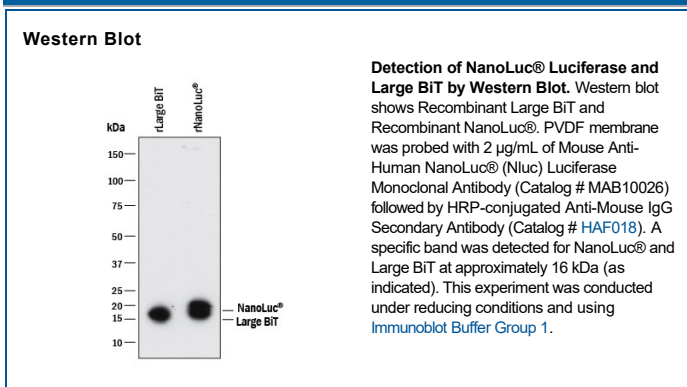
Specificity	Detects NanoLuc® (Nluc) Luciferase in direct ELISAs. Detects NanoLuc® (Nluc) Luciferase and Large BiT in Western blots.
Source	Monoclonal Mouse IgG _{2B} Clone # 965808
Purification	Protein A or G purified from hybridoma culture supernatant
Immunogen	Synthetic peptide of NanoLuc® (Nluc) Luciferase
Formulation	Lyophilized from a 0.2 µm filtered solution in PBS with Trehalose. See Certificate of Analysis for details. *Small pack size (-SP) is supplied either lyophilized or as a 0.2 µm filtered solution in PBS.

APPLICATIONS

Please Note: Optimal dilutions should be determined by each laboratory for each application. [General Protocols](#) are available in the Technical Information section on our website.

	Recommended Concentration	Sample
Western Blot	2 µg/mL	See Below

DATA



PREPARATION AND STORAGE

Reconstitution	Reconstitute at 0.5 mg/mL in sterile PBS.
Shipping	The product is shipped at ambient temperature. Upon receipt, store it immediately at the temperature recommended below. *Small pack size (-SP) is shipped with polar packs. Upon receipt, store it immediately at -20 to -70 °C
Stability & Storage	Use a manual defrost freezer and avoid repeated freeze-thaw cycles. <ul style="list-style-type: none"> • 12 months from date of receipt, -20 to -70 °C as supplied. • 1 month, 2 to 8 °C under sterile conditions after reconstitution. • 6 months, -20 to -70 °C under sterile conditions after reconstitution.

BACKGROUND

NanoLuc® (Nluc) luciferase is a small enzyme (19.1kDa) engineered for optimal performance as a luminescent reporter. NanoLuc® Binary Technology (NanoBiT™) is a two subunit system based on NanoLuc® luciferase. Large BiT (LgBiT; 17.6kDa) is the large subunit of the NanoBiT® system.

References:

PRODUCT SPECIFIC NOTICES

NanoLuc and NanoBiT are registered trademarks of Promega Corporation.