

DESCRIPTION

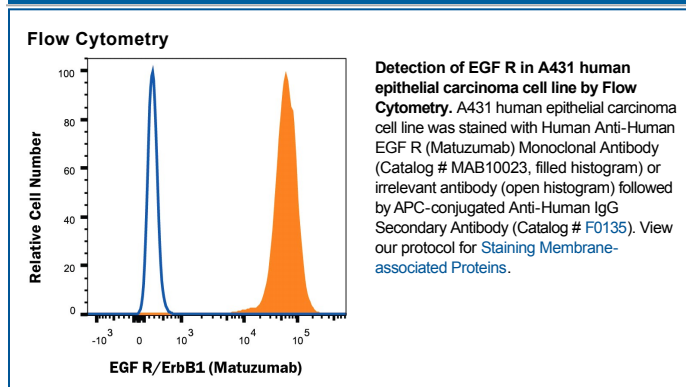
Species Reactivity	Human
Specificity	Detects human EGFR based on Matuzumab therapeutic antibody.
Source	Recombinant Monoclonal Human IgG ₁ Clone # Hu104
Purification	Protein A or G purified from cell culture supernatant
Immunogen	Human EGFR
Formulation	Lyophilized from a 0.2 µm filtered solution in PBS with Trehalose. See Certificate of Analysis for details. *Small pack size (-SP) is supplied either lyophilized or as a 0.2 µm filtered solution in PBS.

APPLICATIONS

Please Note: Optimal dilutions should be determined by each laboratory for each application. *General Protocols* are available in the *Technical Information* section on our website.

	Recommended Concentration	Sample
Flow Cytometry	0.25 µg/mL	See Below

DATA



PREPARATION AND STORAGE

Reconstitution	Reconstitute at 0.5 mg/mL in sterile PBS.
Shipping	The product is shipped at ambient temperature. Upon receipt, store it immediately at the temperature recommended below. *Small pack size (-SP) is shipped with polar packs. Upon receipt, store it immediately at -20 to -70 °C
Stability & Storage	<p>Use a manual defrost freezer and avoid repeated freeze-thaw cycles.</p> <ul style="list-style-type: none"> ● 12 months from date of receipt, -20 to -70 °C as supplied. ● 1 month, 2 to 8 °C under sterile conditions after reconstitution. ● 6 months, -20 to -70 °C under sterile conditions after reconstitution.

BACKGROUND

Matuzumab is a biosimilar directed against the extracellular domain of EGFR. This product can be used as the standard in pharmacokinetic (PK) assays. Matuzumab binds to epidermal growth factor receptor (EGFR) on the outer membrane of normal and tumor cells. The matuzumab epitope has been mapped to domain III of the extracellular domain of the EGFR.